



Hand-Held Scarifiers



Needleguns



Walk-Behind Scarifiers



Impact Tools



Sanders



Specialty Tools



Industrial Vacuums



Standup Grinder

Electric



151.010

DESCO Mfg. Co., Inc.

23031 Arroyo Vista • Rancho Santa Margarita, CA 92688
949.858.7400 • 949.858.9141 fax • 800.337.2648 toll free
www.descomfg.com • info@descomfg.com

Contents

INTRODUCTION	1
MAIN APPLICATIONS	1
TECHNICAL SPECIFICATIONS.....	1
IMPORTANT SAFETY INFORMATION	1
BASIC SAFETY RULES	2
WORK AREA.....	2
ELECTRICAL SAFETY	2
PERSONAL SAFETY	2
TOOL USE AND CARE.....	3
OPERATION	4
PRIOR TO OPERATION	4
GRINDER OPERATION	4
CHANGING ABRASIVES	6
SCHEMATICS.....	7
STANDUP GRINDER SCHEMATIC (151.010).....	7
GRINDER MOTOR SCHEMATIC (110.0721).....	8

Introduction

The Desco standup grinder is a quality power tool with a dust collector attachment to help control dust. The tool provides the features of a powerful grinder with a unique handle allowing the operator to stand upright while running the tool. As with any product of a quality manufacture, service life largely depends on correct handling. These instructions are prepared to help you obtain maximum safety and performance at all times.

Main Applications

- Stripping paint
- Cleaning floors
- Removing rust & corrosion

Technical Specifications

Power	110 v, 15 amp
Weight	31 lbs
Speed, no load	6,000 rpm
Grinding wheel	7"
Spindle thread	5/8" x 11

Important Safety Information

Read and understand all of the safety precautions, warnings and operating instructions in the instruction manual before operating or maintaining this power tool.

Most accidents that result from power tool operation and maintenance are caused by failure to observe basic safety rules or precautions. An accident can often be avoided by recognizing a potentially hazardous situation before it occurs, and by observing appropriate safety procedures

Basic safety precautions are outlined in the Safety section of this instruction manual and in the section which contain the operation and maintenance instructions.

Hazards that must be avoided to prevent bodily injury or machine damage are identified by warnings on the power tool and in this instruction manual.

Basic Safety Rules



WARNING Read and understand all instructions

Failure to follow all instructions listed below may result in electrical shock, fire and/or serious personal injury.

Work Area

1. **Keep work area clean and well lit.** Cluttered benches and dark areas invite accidents.
2. **Do not operate power tools in explosive atmospheres,** such as in the presence of flammable liquids, gasses, or dust. Power tools create sparks which may ignite dust or fumes.
3. **Keep bystanders away** while operating a power tool.

Electrical Safety

1. **Grounded tools must be plugged into an outlet properly installed and** grounded in accordance with all codes and ordinances. Never remove the grounding prong or modify the plug in any way. Do not use any adaptor plugs. Check with a qualified electrician if you are in doubt as to whether the outlet is properly grounded.
2. **Avoid body contact with grounded surfaces** such as pipes, radiators, or structural members. There is an increased risk of electrical shock when your body is grounded.
3. **Keep tool dry.** Do not expose tool to water or wet conditions. Water entering the tool will increase the risk of electrical shock.
4. **Do not abuse the power cord.** Never use the cord to carry the tool or pull the plug from a receptacle. Replace damaged cords immediately.
5. **When operating a power tool outside, use an outdoor extension cord** marked "W-A" or "W".

Personal Safety

1. **Stay alert,** watch what you are doing and use common sense when operating a power tool. Do not operate tool when tired or substance impaired.
2. **Dress properly.** Do not wear loose clothing or jewelry. Contain long hair. Keep hair, clothing and hands away from moving parts.
3. **Use safety equipment.** Always wear eye protection. Other precautions may be required depending on the situation. These include: ear protection (ear plugs) vibration protection (gloves), steel toe shoes or hard hats.
4. **Avoid accidental starting.** Be sure the switch is off before plugging in.
5. **Do not overreach.** Keep proper footing and balance at all times.

Tool Use and Care


1. **Do not force tool.** Apply light hold down pressure and let the tool do the work. Use the correct tool for your application.
2. **Do not use tool if switch is broken.** Any tool that can not be controlled with the switch is dangerous and must be repaired.
3. **Do not tape trigger closed** to fashion a trigger lock. If you drop or otherwise lose control of the tool, it will continue to run and may cause dangerous unintended results.
4. **Disconnect plug from power source before making adjustments** or changing accessories. Failure to unplug may result in injury if the tool were to accidentally start while adjusting.
5. **Store tools out of reach of untrained persons.** Tools are dangerous in the hands of untrained users.
6. **Maintain tools with care.** Keep cutting tools sharp and clean. Properly maintained tools, with sharp cutting edges are less likely to bind and are easier to control.
7. **Check for misaligned or binding of moving parts,** breakage of parts, and any other condition that may affect the tool's operation. If damaged, have the tool serviced before using. Many accidents are caused by poorly maintained tools.

Operation

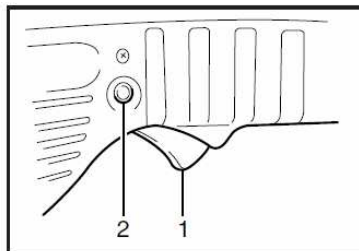
Prior to Operation

- 1) **Power Source** – Ensure that the power source conforms to the requirements specified in this document.
- 2) **Power Switch** – Ensure that the switch is in the OFF position prior to connecting to a power source.
- 3) **Extension Cord** – When the work area is far away from the power source, use an extension cord of adequate rated capacity. The extension cord should be kept as short as practical.
- 4) **Check the Receptacle** – If the receptacle only loosely accepts the plug, the receptacle must be repaired. If such a faulty receptacle is used, it may cause overheating, resulting in a serious hazard.
- 5) **Check your work environment** – Ensure the following before operation:
 - No flammable gas or liquid at worksite.
 - Work piece secured to prevent unwanted movement
 - Area cleared of children or unauthorized personnel.
- 6) **Observe abrasive speed rating** – Use only abrasives rated to run at 6,000 rpm or greater.

Grinder Operation

- 1) **Hold the grinder firmly with both hands.**
- 2) **Switch Operation**  **Caution**
 - Before plugging in the tool, always check to see that the switch trigger actuates properly and returns to the “OFF” position when released.
 - Switch can be locked in “ON” position for ease of operator comfort during extended use. Apply caution when locking tool in “ON” position and maintain firm grasp on tool.

To start the tool, simply pull the switch trigger. Release the switch trigger to stop. For continuous operation, pull the switch trigger and then push in the lock button. To stop the tool from the locked position, pull the switch trigger fully, then release it.



1. Switch trigger
2. Lock button

- 3) **Use light grinding pressure** – There is no need to press hard when grinding. The grinder's own weight is sufficient to allow the required light contact with the surface to be grinded. Let the tool do the work.
- 4) **Flat Abrasives** – Only flat abrasives that do not secure with a center nut may be used on the standup grinder. This includes diamond cup wheels and DescoRip discs.
- 4) **The proper grinding angle** is to be flat against the floor. Unlike hand held grinders where a 15° angle is preferred, the standup grinder requires no angle. The operation and control of the stand up grinder is very similar to a walk behind floor buffer. The key is to maintain proper balance to keep the tool from wandering to the left or right. Too much of an angle on the front part of the head will cause the machine to move to the right. Whereas too much angle on the rear of the machine will cause it to move left. The more aggressive the discs, the greater the tendency for the machine to travel to the right or left from excessive head angle.
****Note: always practice first using the machine in an open area until operator has mastered proper control of the grinder.**



Changing Abrasives

Changing abrasives is a simple procedure as described below.

- 1) Disconnect tool from power source.
- 2) Lay grinder on its side.
- 3) Lock the spindle by pressing shaft locking button and turning backup pad with hand until shaft locks.

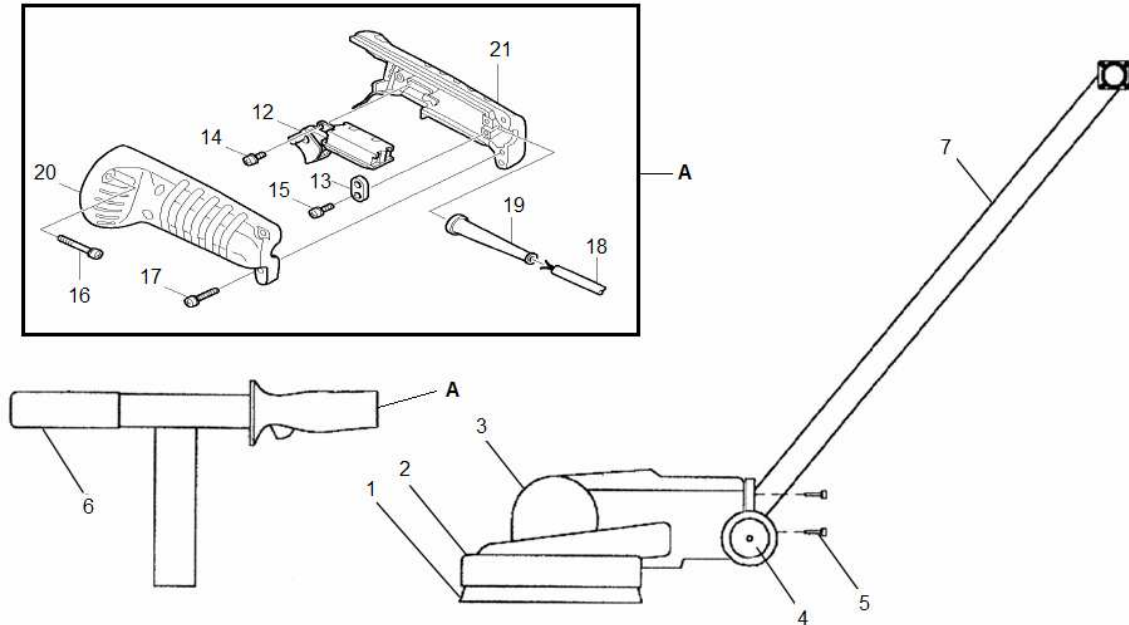


Shaft Lock

- 4) To remove abrasive, hold the shaft lock button and turn the abrasive in the counter-clockwise direction.
- 5) To install abrasive, hold the shaft lock button and turn the abrasive in the clockwise direction.

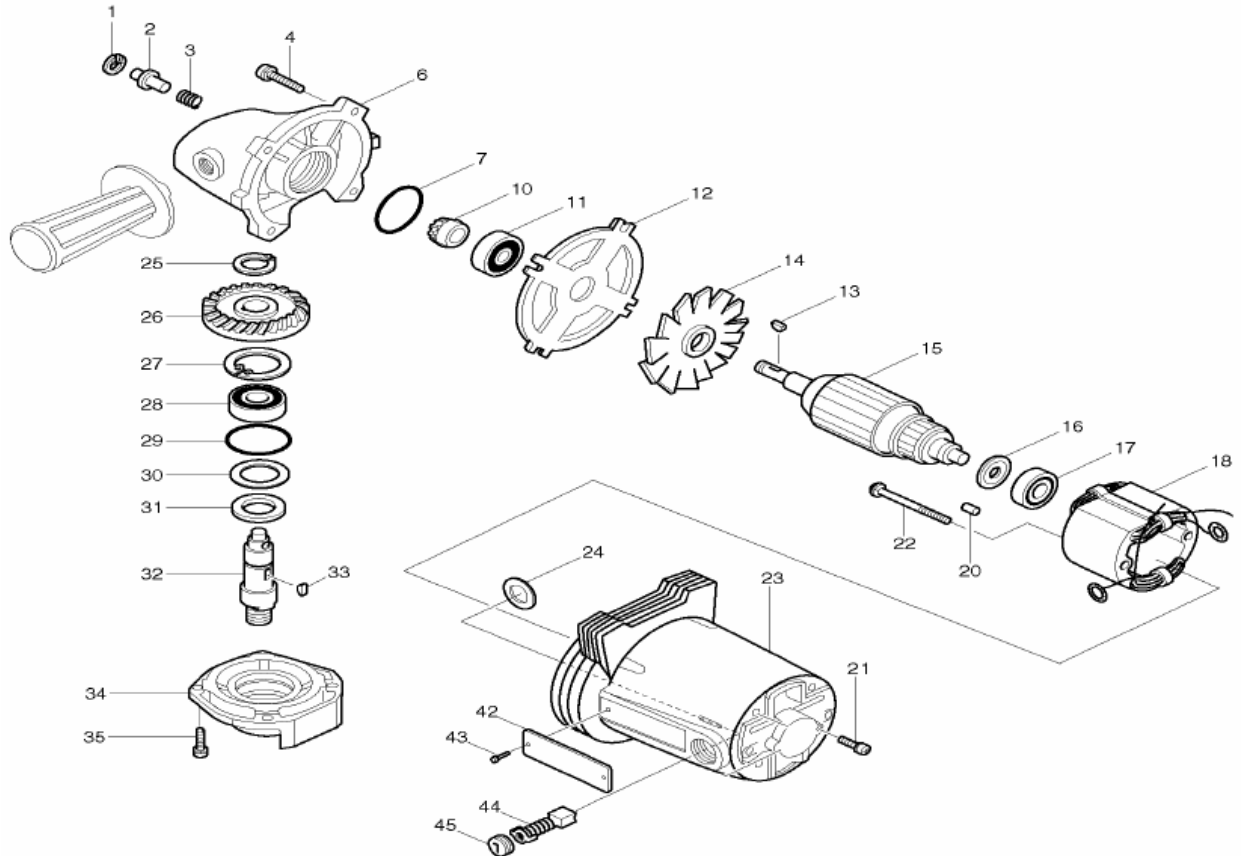
Schematics

Standup Grinder Schematic (151.010)



Ref	Part No	Description
1	200.010	Replacement Brush
2	151.022	Shroud Assembly
3	110.0721	Right Angle Motor
4	500.231	Wheels
5	750.132	¼-28 X 1" Skt Hd
6	151.027	1 ½" Foam Grip
7	151.026	Handle Assembly
12	651128-3	Switch, 9005B
13	687000-3	Strain relief, GA7001L
14	911113-1	P.H. screw, M4X10, 4301BV
15	911133-5	P.H. screw, M4X18, N9501B
16	911238-1	P.H. screw, M5X22, GA7001L
17	911148-2	P.H. screw, M4X25, 5057KB
18	664820-2	Cord (3X14X8 SJ), GA7001L
19	682505-8	Cord guard, 2711
20	181390-1	Handle set,GA7001L
21	181390-1	Handle set,GA7001L

Grinder Motor Schematic (110.0721)



Ref	Part No	Description	Qty	Ref	Part No	Description	Qty
1	962062-5	Retaining ring R-12, 3612	1	24	681002-1	Ins. washer, 2012	2
2	256615-3	Shaft lock pin 6, GA7001L	1	25	961057-5	Retaining ring S-17, 2711	1
3	231037-8	Comp. spring 7, GA7001L	1	26	221323-5	Spiral B. gear, GA7001L	1
4	911236-5	P.H. Screw M5X22, GA7001L	4	27	962157-4	Retaining ring R-40, GA7911	1
6	156781-5	Gear housing, GA7911	1	28	211256-2	B. bearing 6203LLB, GA7001L	1
7	213506-1	O ring 36, GA7911	1	29	213505-3	O ring 40, GA7001L	1
10	221322-7	Spiral B. gear, GA7001L	1	30	253772-8	F. washer 28, GA7001L	1
11	211111-8	Ball bearing 6301LLB, 6300LR	1	31	443036-0	Felt ring, GA7001L	1
12	341706-4	Plate, GA7911	1	32	321355-3	Spindle, GA7911	1
13	254038-9	Woodruff key 4, HM1500	1	33	254038-9	Woodruff key 4, HM1500	1
14	241315-8	Fan 100, GA7911	1	34	152228-7	Housing W/O Bearing, GA7911	1
15	518423-3	Armature assy, GA7911	1	35	911226-8	P.H. screw M5X18, GA7911	4
16	213051-6	Dust seal 10, 2711	1	42	854287-4	Name plate, GA7911	1
17	211068-3	B. Bearing 6200LB, 6820V	1	43	953106-2	Rivet 0-5, HM1500	2
18	524796-4	Field, GA7911	1	44	181047-4	Carbon brush set 154,5402A	1
20	263002-9	Rubber pin 4, HR2400	1	44	194986-9	Carbon brush set CB-154, UC3530A	1
21	652014-1	P.H. screw M4X8, 2708	1	45	643650-4	Brush holder cap, 5007MG	2
22	911290-9	P.H. screw M5X65, GA7911	2				
23	153563-6	Motor housing CPL, GA7001L	1				
23	156780-7	Motor housing, GA7001L	1				

Products with multiple versions are listed in subsiding order with the newest version on top not indented.