



**Hand-Held
Scarifiers**



Needleguns



**Walk-Behind
Scarifiers**



Impact Tools



Sanders



**Specialty
Tools**



**Industrial
Vacuums**



High Efficiency Wet/Dry Vacuum *Pneumatic Padeye Systems*



**30 Gallon
340.970530.01**



**15 Gallon
340.970515.01**



**55 Gallon
340.970555.01**

Configurations

Part	Description
340.970515.01	15 Gallon Wet/Dry – High Efficiency Vacuum
340.970530.01	30 Gallon Wet/Dry – High Efficiency Vacuum
340.970555.01	55 Gallon Wet/Dry – High Efficiency Vacuum

DESCO Mfg. Co., Inc.

23031 Arroyo Vista • Rancho Santa Margarita, CA 92688
949.858.7400 • 949.858.9141 fax • 800.337.2648 toll free
www.descomfg.com • info@descomfg.com

Contents

OPERATING INSTRUCTIONS	1
INSPECTION	1
SPECIAL WARNING	1
AIR PRESSURE AND CFM REQUIRED	1
MAINTENANCE AND USAGE	1
SPECIFICATIONS.....	1
ASSEMBLY PROCEDURES	2
ASSEMBLY PROCEDURE FOR 15 GALLON PADEYE FOR WET/DRY SETUP	2
<i>Wet Pickup</i>	2
<i>Dry Pickup</i>	2
CLEANUP PROCEDURE FOR 15 GALLON PADEYE FOR WET/DRY SETUP	2
<i>Wet Pickup</i>	2
<i>Dry Pickup</i>	2
ASSEMBLY PROCEDURE FOR 30 AND 55 GALLON PADEYE SYSTEMS.....	3
<i>Wet Pickup</i>	3
<i>Dry Pickup</i>	3
CLEANUP PROCEDURE FOR 30 AND 55 GALLON PADEYE SYSTEMS.....	3
<i>Wet Pickup</i>	3
<i>Dry Pickup</i>	3
SCHEMATICS	4
VACUUM HEAD SCHEMATIC	4
15 GALLON TANK SCHEMATIC.....	6
DRUM ADAPTER SCHEMATIC.....	8
30 AND 55 GALLON DRUM ASSEMBLY SCHEMATIC	9
PADEYE DOLLY CART ASSEMBLY SCHEMATIC.....	10
CONSUMABLES SCHEMATIC	11

Operating Instructions

Inspection

Carefully unpack and inspect your machine for shipping damage. Each unit is tested and thoroughly inspected before shipment, and any damage is the responsibility of the delivering carrier who should be notified. Read all instructions carefully before operating.

Special Warning

Air operated equipment can generate static electricity during use. Static dissipating arcing can be generated and occur if equipment and accessories are not grounded. Risk of explosion is possible if operated near explosive materials or vapors. Do not operate this equipment near flammable materials such as solvents, thinners, fuels, grain dust, etc.

Air Pressure and CFM Required

For maximum performance, operate with ½" air pressure line, 80 PSI (max. 100 PSI) and 42 CFM. An air pressure control valve can be regulated to operate with lower pressure and CFM when maximum is not required.

Maintenance and Usage

Air supplied to vacuum must be clean and dry to avoid contamination and to maintain optimum performance.

Empty tank, clean filter bag and replace disposable filters regularly. Clogged filters restrict air flow and results in reduced vacuum performance.

Always shut off main air supply and open air valve at vacuum to relieve pressure before disconnecting air pressure line.

Specifications

Tank size:	15 gallons
Wet capacity:	10 gallons
Dry capacity:	1.86 cubic feet
Compressed air required:	
Pressure @ volume:	100 psi @ 42 cfm
Air supply hose:	1/2 inch
Vacuum strength:	
Air flow:	166 cfm
Water lift:	180 inches
Efficiency ratio:	3.95



Assembly Procedures

Assembly Procedure for 15 Gallon Padeye for Wet/Dry Setup

See schematic on page 11, figure 1. Wet/dry setup refers to vacuums equipped with a float ball and cage for automatic shut-off when tank is full of liquid.

Wet Pickup

1. Remove filter bag and filter protector.
2. Place lid assembly #1 onto tank and fasten lid latches
3. Connect ½" air pressure line to shut off valve on lid.
4. Attach vacuum host to intake.
5. To operate, open air shut off valve to desired setting.

Dry Pickup

1. For dry recovery, place filter bag assembly #2 onto tank assembly #4.
2. Place lid assembly #1 onto tank and fasten lid latches.
3. Connect ½" air pressure line to shut off valve on lid.
4. Attach vacuum host to intake.
5. To operate, open air shut off valve to desired setting. Option: for fine dust recovery, a filter bag protector #3 is recommended to be installed ahead of the filter bag assembly #2. (Must be ordered as separate item 340.805038PKG of 12.)

Cleanup Procedure for 15 Gallon Padeye for Wet/Dry Setup

Always empty and dry tank assembly at end of each operating day or when vacuum will not be in use over an extended period of time.

Wet Pickup

1. Shut off air supply at lid assembly.
2. Loosen lid latch and remove lid assembly.
3. Empty tank into suitable container.
4. Reassemble following above procedure.

Dry Pickup

1. Shut off air supply at lid assembly.
2. Loosen lid latch and remove lid assembly.
3. Remove cloth filter bag assembly.
4. When filter bag protector is used, remove protector.
5. Empty tank into suitable container.
6. Reassemble following above procedure.



Innovative Solutions

Assembly Procedure for 30 and 55 Gallon Padeye Systems

Wet Pickup

1. Place adapter riser #5 onto drum. Do not install filter bag or protector bags for wet recover.
2. Place lid assembly onto adapter riser.
3. Connect ½" air line to air control (shut off) valve on the lid assembly.
4. Attach vacuum hose to intake port on the adapter riser assembly.
Note: intake port will accept 1-1/2" or 2" hose.
5. Vacuum is ready for use.

Dry Pickup

1. Place adapter riser #5 onto drum.
2. Place cloth filter bag #2 onto the riser adapter riser.
Option: for fine dust recovery, a filter bag protector #3 is recommended to be installed first around the outside of #2 filter bag.
3. Place lid assembly onto the adapter riser with already installed filter(s).
4. Fasten both latches.
5. Connect a ½" air line to the air control (shut off) valve.
6. Attach vacuum hose to intake port on the adapter riser assembly.
(Note: intake port will accept 1-1/2" or 2" hose.)
7. Vacuum is ready to use.

Cleanup Procedure for 30 and 55 Gallon Padeye Systems

Wet Pickup

1. Disconnect air supply at control valve.
2. Remove vacuum nose from adapter riser.
3. Liquid may be drained from the dump valve located at the side bottom of the drum. **Note:** Always refer to OSHA standards for proper dispensing of toxic liquids. These can be found at www.osha.gov.

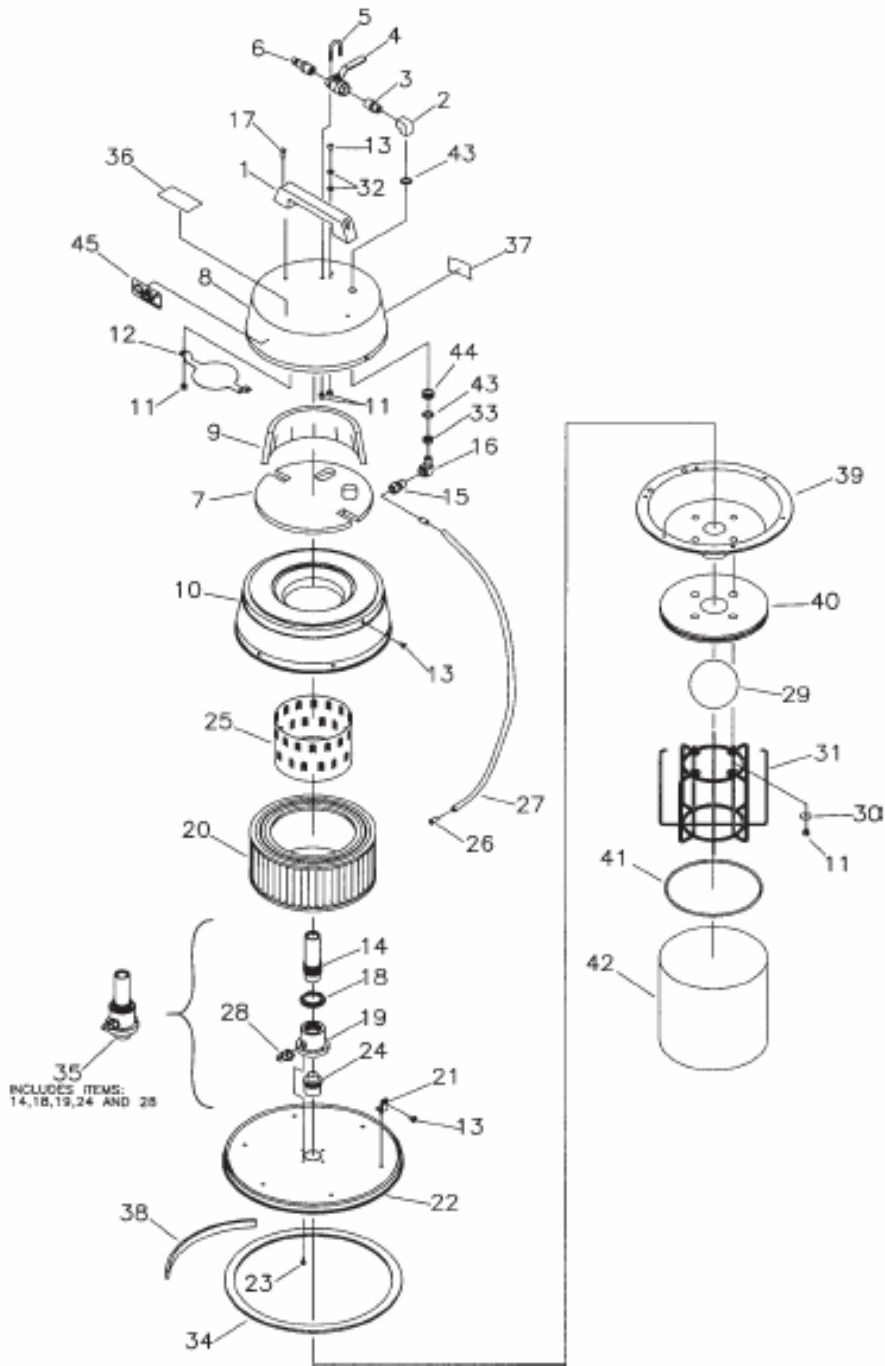
Dry Pickup

1. Disconnect air supply at control valve.
2. Remove vacuum hose from adapter riser.
3. Remove lid assembly from adapter riser.
4. Remove cloth filter bag and filter protection bag (if used) from adapter.
5. When a filter bag protector is used, remove protector and place in a suitable trash container.
6. Wipe inside of drum clean.



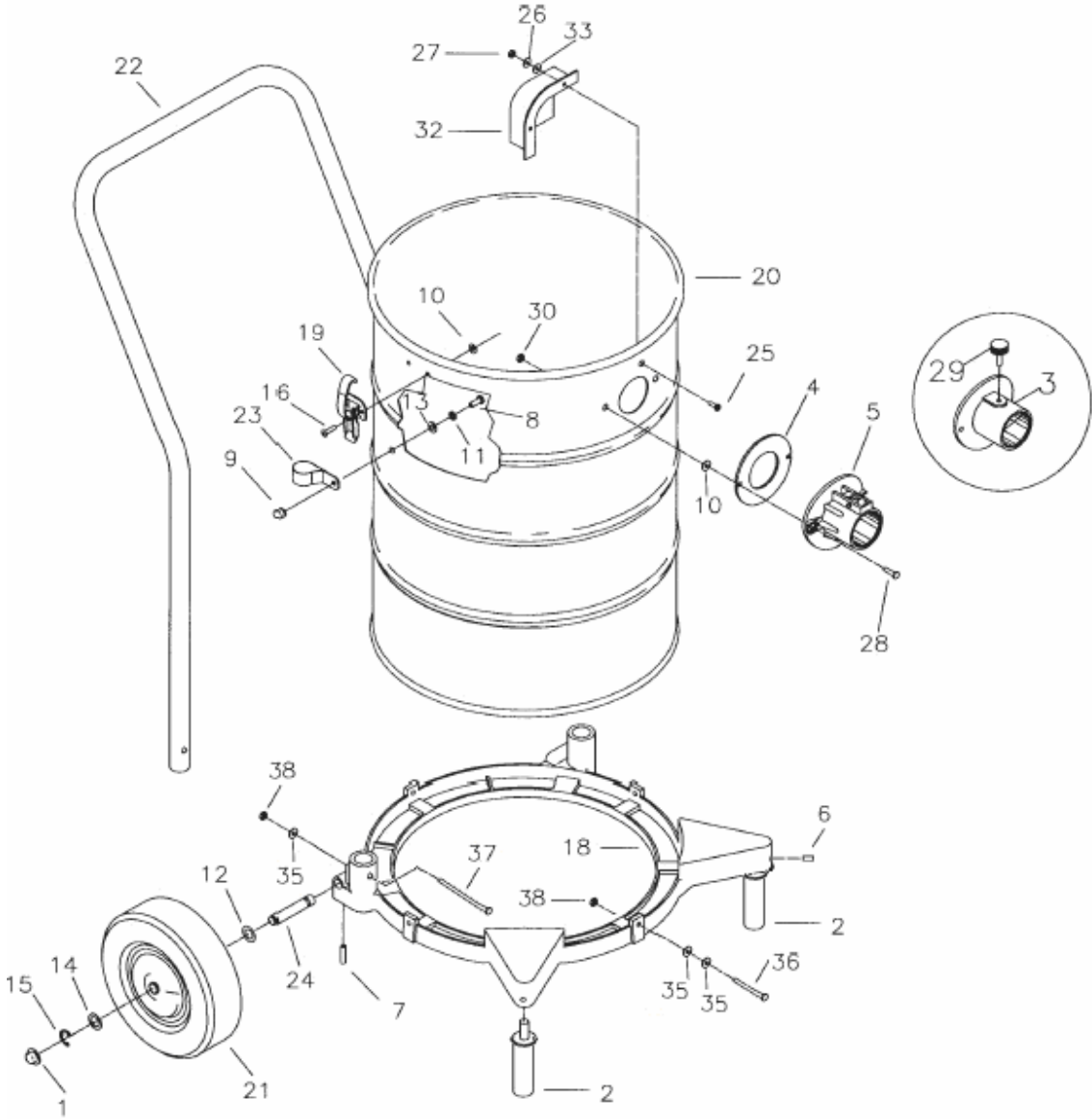
Schematics

Vacuum Head Schematic



Ref	Part Number	Qty	Description
1	340.460000	1	Handle
2	340.700028	1	3/8 X 3/8 Brass Elbow
3	340.420017	1	Hew Nipple Reducer
4	340.701009	1	.50 Valve
5	340.712105	1	U-Bolt
6	340.701010	1	.50 Coupler
7	340.700018	1	Dome Felt
8	340.700022PTD	1	Top Cover
9	340.700016	1	Felt Liner
10	340.700023PTD	1	Filter Cover-Outer Housing
11	340.712667	15	1/4-20 SS Nyloc Nut
12	340.700019	1	Air Deflector
13	340.710178	10	1/4-20 x .50 SCR-MC STPL
14	340.700012	1	Venturi Exhaust Tube
15	340.420008	1	Male Connector
16	340.830062	1	3/8 x 3/8 Brass ST90
17	340.713002	2	BLT HH 1/4-20 x .75 #5
18	340.700014	1	Locking Nut
19	340.700011	1	Venturi Housing
20	340.700026	1	Exhaust Filter
21	340.832106	6	Bracket Mounting Tab
22	340.700024	1	Bottom Pan
23	340.712536	4	SCR-THMC 10-24 x .62 STPL
24	340.700013	1	Venturi Intake
25	340.700017	1	Perforated Shield
26	340.420011	2	Brass Insert
27	340.700021	1	Poly Hose 32" Long
28	340.420009	1	Male Elbow 469F
29	340.380046	1	Hollow Rubber Ball
30	340.712761	4	WSR-FLat .25x1.01x.06 SS
31	340.380045CTD	1	Float Cage Assembly
32	340.711505	2	WSR-Flat 1/4
33	340.829285PLT	1	Spacer-Zinc Plated
34	340.480052	1	Gasket, Rubber .25x.87x.50
35	340.700010	1	Venturi Assembly
36	340.715003	1	Decal, Air Pressure
37	340.715029	1	Decal, Serial Name Plate
38	340.480053	1	Rubber Locating Ring
39	340.750801	1	Water Shut-Off Adapter
40	340.760231MCH	1	Adapter
41	340.760260	1	Spring
42	340.760234	1	Lint Filter Bag
43	340.711513	2	WSR-Flat .689x1.06x.029 SS
44	340.260274	1	Grommet
45	340.715388	1	Decal, QAV

15 Gallon Tank & Dolly Cart Schematic

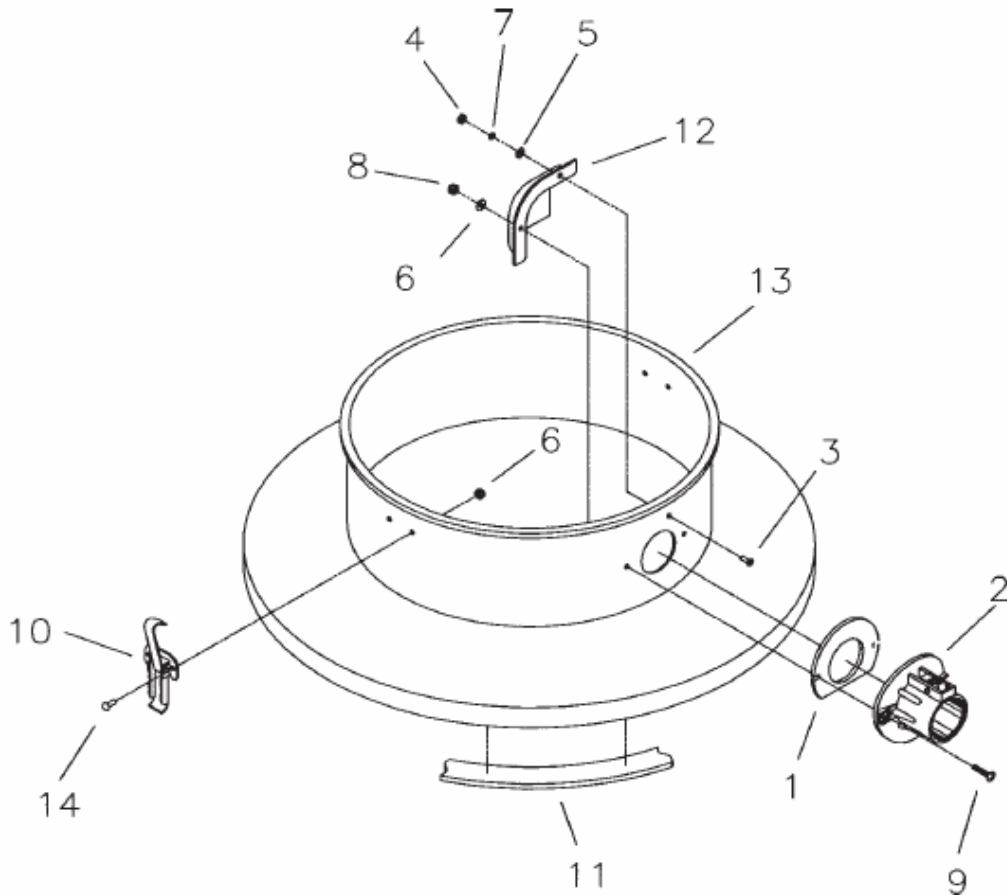


Ref	Part Number	Qty	Description
1	340.130032	2	Cap, Retainer
2	340.900009	2	Dolly Foot Assy.
4	340.390087	1	Gasket Diecut
5	340.390110	1	Intake Assembly Aluminum
6	340.711005	2	SCR-SK 1/4-20 x .31
7	340.711006	2	SCR-SK 1/4-20 x .62
8	340.711202	2	BLT-HH 1/4-20 x .50 STPL
9	340.711371	2	1/4-20 Thin Nylon Nut
10	340.711503	6	WSR-Flat #10
11	340.711505	2	WSR-Flat 1/4
12	340.711524	2	WSR-Wave .52 x .87 x .01
13	340.711591	2	WSR-Rubber
14	340.711594	2	WSR-Flat .56 x .88 x .03 NI
15	340.711713	2	Retaining Ring Ext .50
16	340.711915	6	Rivet-Tube .19 x .28 NI PL
18	340.760984PTD	1	Bracket, Wheel
19	340.761054	2	Latch
21	340.900008.1	2	Wheel 8.00 Dia
22	340.900037.PL	1	Handle, Plated
23	340.900038	2	Clamp, Handle
24	340.900066	2	Axle
25	340.710530	1	SCR-MC 8-32x.50 BR
26	340.711502	1	WSR-Flat #8
27	340.711372	1	Nut-Nloc 8-32 (750382 Only)
28	340.712824	2	SCR-THMS 10-24x.75 STPL
30	340.712638	2	Nut Hex 10/24 SS Nyloc
32	340.900035	1	Deflector, Intake
33	340.711542	1	Helical Washer #8
34	340.711204	1	1/4"-20 x 3/4" SS, SHCS
35	340.711504	4	WSR-Flat, 1/4" SS
37	500.9219	2	1/4"-20 x 2-1/4", SS, SHCS
38	340.711373	3	Nut-1/4-20, NylocNut
***	340.900003POL	1	15 Gallon Tank-Polished

Drum Adapter Schematic

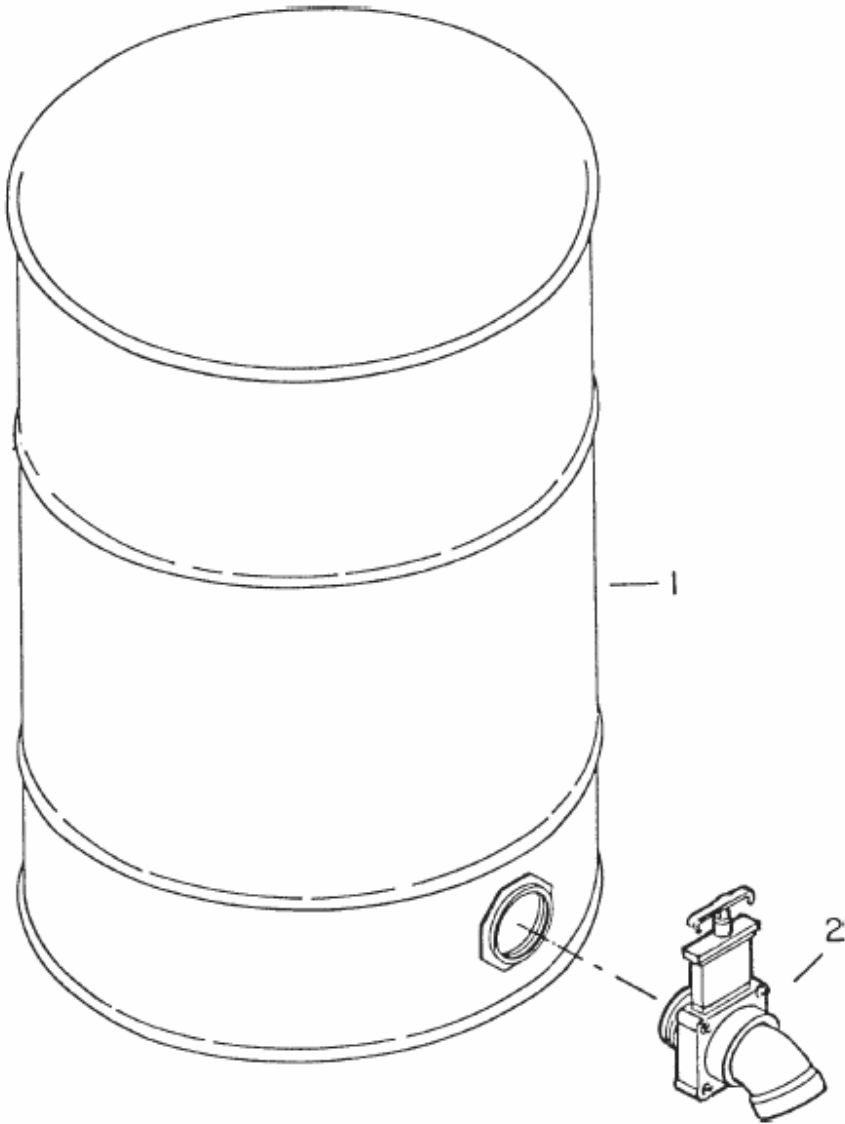
340.8060150 – 30 Gallon Adapter Assembly, Complete

340.8060160 – 55 Gallon Adapter Assembly, Complete



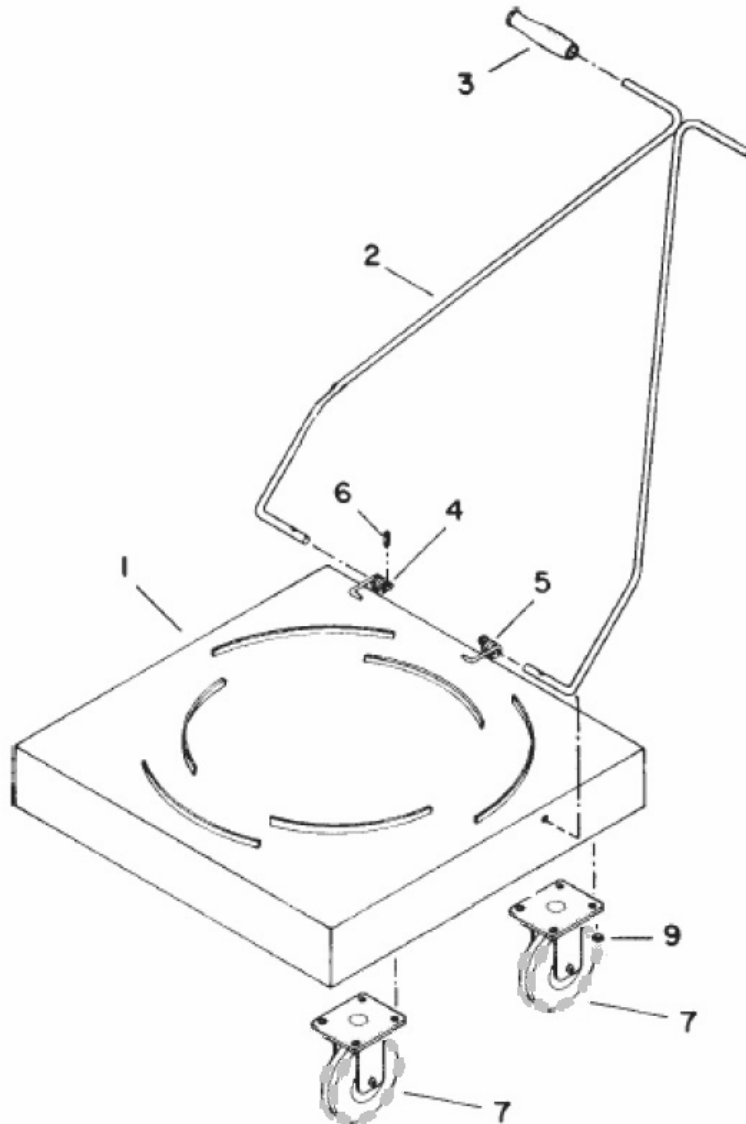
Ref	Part Number	Qty	Description
1	340.390087	1	Gasket Diecut VNN
2	340.390110	1	Intake Asy Aluminum
3	340.710530	1	SCR-MC 8-32x.50 BR
4	340.711304	1	Hex-Nut 8-32 ST PL
5	340.711502	1	Flat Washer #8
6	340.711503	6	Flat Washer #10
7	340.711542	1	Helical Washer #8
8	340.712638	2	Nut Hex 10/24 SS Nyloc
9	340.712824	2	SCR-THMS 10-24x.75 STPL
10	340.761054	2	Latch
11	340.806006	1	Gasket
12	340.900035	1	Deflector, Intake
13	340.806015	1	30 Gal Adapter Painted
13A	340.806016	1	55 Gal Adapter Painted
14	340.711915	4	Rivet Tube

30 and 55 Gallon Drum Assembly Schematic



Ref	Part Number	Qty	Description
1	340.900078PTD	1	Tank 30 Gal PTD, No Handles
1A	340.900015PTD	1	Tank 55 Gal PTD, No Handles
2	340.900047	1	Dump Valve
***	340.900078	1	Tank 30 Gal Complete
***	340.900015	1	Tank 55 Gal Complete

Padeye Dolly Cart Assembly Schematic



Ref	Part Number	Qty	Description
1	340.750045	1	Weldment dolly 30/55
2	340.900051	1	Weldment, handle
3	340.900052	2	Grip, handle
4	340.900080	1	Spring, torsion RH
5	340.900081	1	Spring, LH
6	340.711642	2	Rollpin
7	340.700000	4	Castor, rigid 5", non-conductive, nylon
9	340.711379	16	Nut-Flanged Wizz 5/16-18 ST PL
****	340.900049		Padeye Dolly Cart, complete

Consumables Schematic

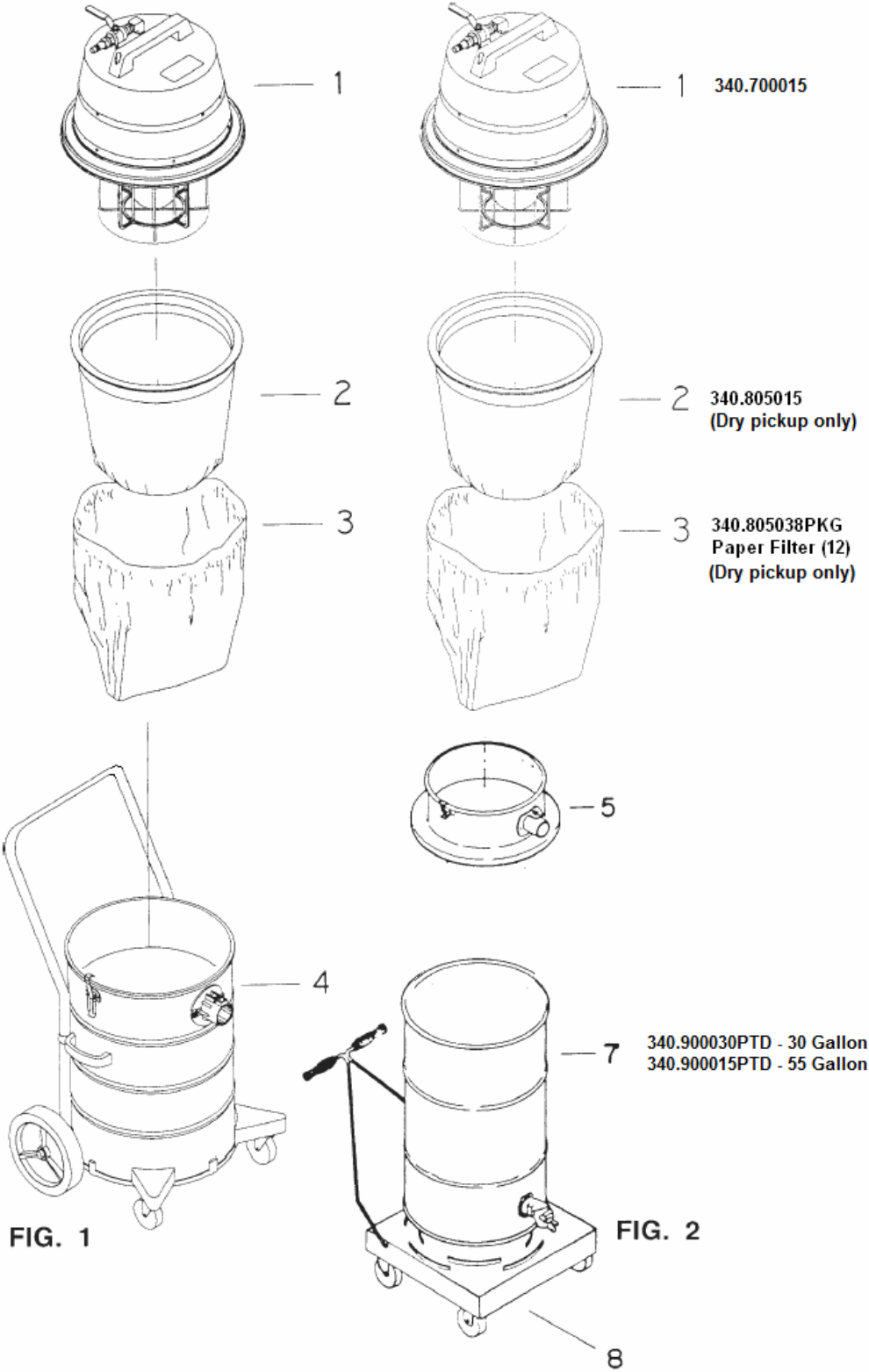


FIG. 1

FIG. 2

