



Hand-Held Scarifiers



Needleguns



Walk-Behind Scarifiers



Impact Tools



Sanders



Specialty Tools



Industrial Vacuums



High Efficiency Pneumatic Vacuum

15 Gallon, Stainless Steel Tank

ULPA Filtration (dry only) or Wet/Dry



Configurations

Part	Description	Usage	Filtration
340.70515.01	15 Gallon, Stainless Tank	Wet/Dry	None (Wet pickup) Bag (Dry pickup)
340.87515.03	15 Gallon, Stainless Tank	Dry Only	ULPA

DESCO Mfg. Co., Inc.

23031 Arroyo Vista • Rancho Santa Margarita, CA 92688
949.858.7400 • 949.858.9141 fax • 800.337.2648 toll free
www.descomfg.com • info@descomfg.com

Contents

OPERATING INSTRUCTIONS	1
INSPECTION	1
SPECIAL WARNING.....	1
AIR PRESSURE AND CFM REQUIRED	1
MAINTENANCE AND USAGE.....	1
FEATURES/SPECIFICATIONS/CONSUMABLES FOR VACUUMS.....	1
FEATURES.....	1
SPECIFICATIONS	2
FIVE STAGE FILTRATION.....	2
ASSEMBLY PROCEDURES	2
ASSEMBLY PROCEDURE FOR WET/DRY SETUP	2
<i>Wet Pickup</i>	2
<i>Dry Pickup</i>	2
CLEANUP PROCEDURE FOR WET/DRY SETUP	3
<i>Wet Pickup</i>	3
<i>Dry Pickup</i>	3
ASSEMBLY PROCEDURE FOR ULPA SETUP.....	3
CLEANUP PROCEDURE FOR ULPA SETUP.....	3
ULPA CONSUMABLES.....	3
SCHEMATICS	4
VACUUM HEAD SCHEMATIC – WET/DRY CONFIGURATION	4
VACUUM HEAD PARTS LIST – WET/DRY CONFIGURATION	5
VACUUM HEAD SCHEMATIC – ULPA CONFIGURATION	6
VACUUM HEAD PARTS LIST – ULPA CONFIGURATION	7
TANK SCHEMATIC – WET/DRY & ULPA	8
TANK PARTS LIST – WET/DRY & ULPA.....	9
CONSUMABLES SCHEMATIC – WET/DRY CONFIGURATION.....	10
CONSUMABLES SCHEMATIC – ULPA CONFIGURATION	11

Operating Instructions

Inspection

Carefully unpack and inspect your machine for shipping damage. Each unit is tested and thoroughly inspected before shipment, and any damage is the responsibility of the delivering carrier who should be notified. Read all instructions carefully before operating.

Special Warning

Air operated equipment can generate static electricity during use. Static dissipating arcing can be generated and occur if equipment and accessories are not grounded. Risk of explosion is possible if operated near explosive materials or vapors. Do not operate this equipment near flammable materials such as solvents, thinners, fuels, grain dust, etc.

Air Pressure and CFM Required

For maximum performance, operate with ½" air pressure line, 80 PSI (max. 100 PSI) and 42 CFM. An air pressure control valve can be regulated to operate with lower pressure and CFM when maximum is not required.

Maintenance and Usage

Air supplied to vacuum must be clean and dry to avoid contamination and to maintain optimum performance.

Empty tank, clean filter bag and replace disposable filters regularly. Clogged filters restrict air flow and results in reduced vacuum performance.

Always shut off main air supply and open air valve at vacuum to relieve pressure before disconnecting air pressure line.

Features and Specifications

- 340.87515.03 - 15 Gal Stainless High Efficiency ULPA
- 340.70515.01 - 15 Gal Stainless High Efficiency Wet/Dry

Features

Feature	Config
• Vertical Venturi High Efficiency Motor	All
• Stainless Steel Tank to Fight off Corrosion	All
• Dolly Cart For Easy Movement	All
• QAV Technology Reduces Noise to not exceed 80 dba	All
• 25' crush resistant hose with swivel cuff	All
• Five (5) Stages of Filtration	ULPA Only
• Equipped with U.L.P.A. Filter which is 99.999% Efficient @ 0.12 microns	ULPA Only
• Available with float-ball and cage for wet/dry use (340.70515.01)	Wet/Dry Only

Specifications

Tank Size:	15 Gallon
Wet Capacity:	10 Gallons
Dry Capacity:	1.86 Cubic Feet
Compressed Air Required:	
Pressure @ Volume:	100psi @ 42 cfm
Air Supply Hose	1/2"
Vacuum Strength:	
Air Flow	166cfm
Waterlift:	180 Inches
Efficiency Ratio:	3.95

Five Stage Filtration

Stage	Filtration Component	Part Number
1.	Paper filter collection bags	340.760598PKG
2.	Paper filter protectors	340.805038PKG
3.	Cloth bag assy (grey)	340.805058
4.	Pre-filter sleeve	340.110030PKG
5.	ULPA Filter	340.110029

Assembly Procedures

Assembly Procedure for Wet/Dry Setup

See schematic on page 10, figure 4. Wet/Dry setup refers vacuums equipped with a float ball and cage for automatic shut-off when tank is full of liquid.

Wet Pickup

1. Remove filter bag and filter protector.
2. Place lid assembly #1 onto tank and fasten lid latches.
3. Connect 1/2" air pressure line to shut off valve on lid.
4. Attach vacuum hose to intake.
5. To operate, open air shut off valve to desired setting.

Dry Pickup

1. For dry recovery, place filter bag assembly #2 onto tank assembly #4.
2. Place lid assembly #1 onto tank and fasten lid latches.
3. Connect 1/2" air pressure line to shut off valve on lid.
4. Attach vacuum hose to intake.
5. To operate, open air shut off valve to desired setting. Option: For fine dust recovery, a filter bag protector #3 is recommended to be installed ahead of the filter bag assembly #2. (Must be ordered as separate item 340.805038PKG of 12.)

Cleanup Procedure for Wet/Dry Setup

Always empty and dry tank assembly at end of each operating day or when vacuum will not be in use over an extended period of time.

Wet Pickup

1. Shut off air supply at lid assembly.
2. Loosen lid latch and remove lid assembly.
3. Empty tank into suitable container.
4. Reassemble following above procedure.

Dry Pickup

1. Shut off air supply at lid assembly.
2. Loosen lid latch and remove lid assembly.
3. Remove cloth filter bag assembly.
4. When filter bag protector is used, remove protector.
5. Empty tank into suitable container.
6. Reassemble following above procedure.

Assembly Procedure for ULPA Setup

See schematic on page 11, figure 5. ULPA setup refers vacuums equipped an ULPA filter and without a float ball and cage.

1. Place a pre-filter sleeve over the ULPA filter assembly centered on the paper element.
2. Install a paper filter protector (recommended for fine dust) over the outside of the cloth bag.
3. Unfold and open the collection bag and install the bag opening to the end of the down tube located inside the tank.
4. Place lid assembly onto tank and fasten the latches.
5. Connect a 1/2" air hose to the air fitting (100 PSI max).
6. Attach vacuum hose to intake port.

Cleanup Procedure for ULPA Setup

1. Release latches and remove lid.
2. Pull out the cloth bag and remove the filter protector.
3. Cloth bag may be cleaned if necessary.
4. Remove the collection bag from the bottom of down tube inside the tank and discard into proper dispenser.
5. Wipe tank clean.

ULPA Consumables

Part	Description
340.110029	ULPA Filter
340.110030PKG	Pre-Filter Sleeves
340.760598PKG	Paper Filter Collection Bags
340.805035PKG	Paper Filter Protectors

Schematics

Vacuum Head Schematic – Wet/Dry Configuration

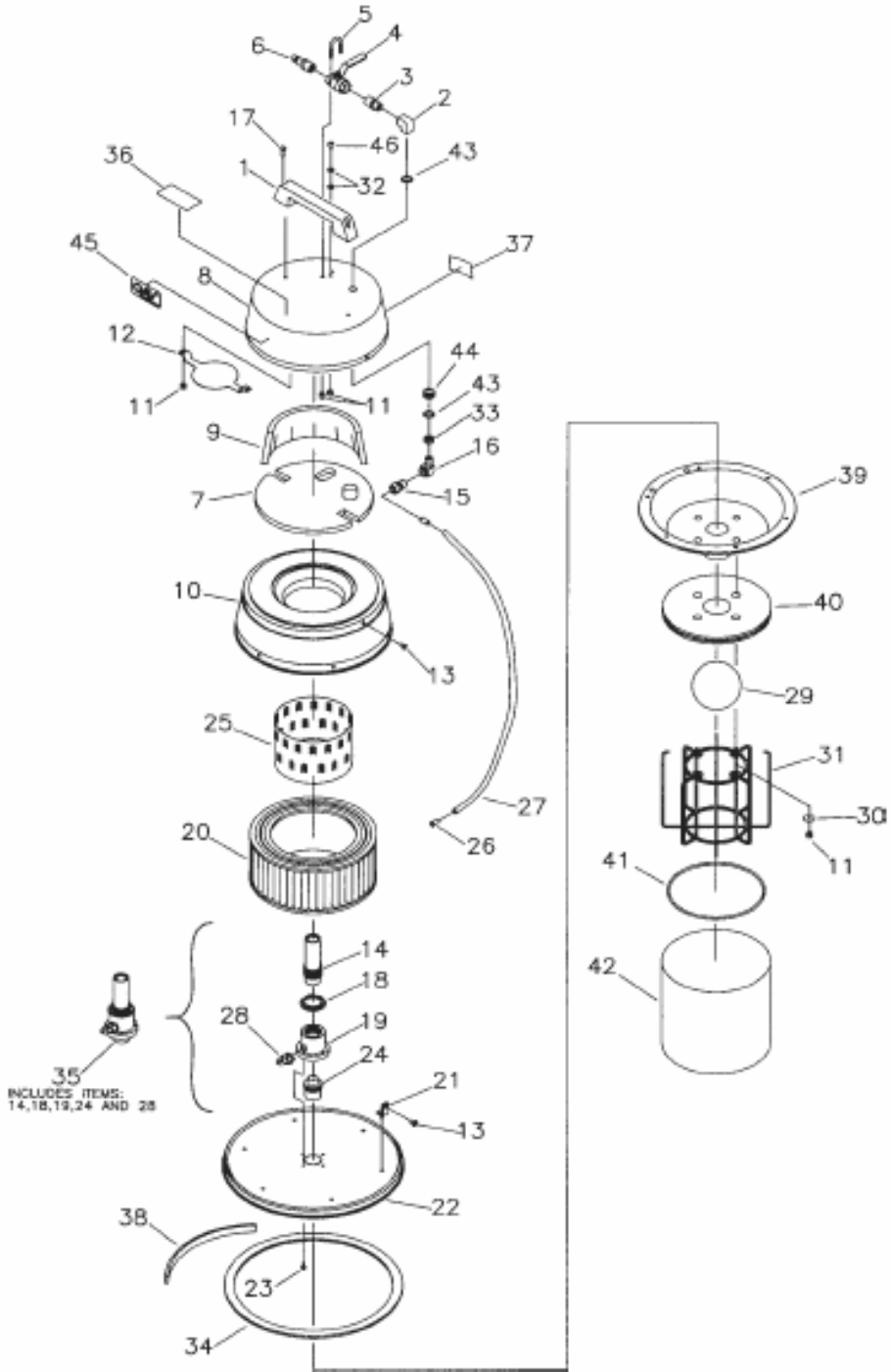


Figure 1 – Wet/Dry Setup

Vacuum Head Parts List – Wet/Dry Configuration

Ref	Part Number	Qty	Description
1	340.460000	1	Handle
2	340.700028	1	3/8 X 3/8 Brass Elbow
3	340.420017	1	Hex Nipple Reducer
4	340.701009	1	.50 Valve
5	340.712105	1	U-Bolt
6	340.701010	1	.50 Coupler
7	340.700018	1	Dome Felt
8	340.700022PTD	1	Top Cover
9	340.700016	1	Felt Liner
10	340.700023PTD	1	Filter Cover-Outer Housing
11	340.712667	15	1/4-20 SS Nyloc Nut
12	340.700019	1	Air Deflector
13	340.710178	9	1/4-20 x .50 SCR-MC STPL
14	340.700012	1	Venturi Exhaust Tube
15	340.420008	1	Male Connector
16	340.830062	1	3/8 x 3/8 Brass ST90
17	340.713002	2	BLT HH 1/4-20 x .75 #5
18	340.700014	1	Locking Nut
19	340.700011	1	Venturi Housing
20	340.700026	1	Exhaust Filter
21	340.832106	6	Bracket Mounting Tab
22	340.700024	1	Bottom Pan
23	340.712536	4	SCR-THMC 10-24 x .62 STPL
24	340.700013	1	Venturi Intake
25	340.700017	1	Perforated Shield
26	340.420011	2	Brass Insert
27	340.700021	1	Poly Hose 32" Long
28	340.420009	1	Male Elbow 469F
29	340.380046	1	Hollow Rubber Ball
30	340.712761	4	WSR-FLat .25x1.01x.06 SS
31	340.380045CTD	1	Float Cage Assembly
32	340.711504	4	WSR-Flat 1/4 SS
33	340.829285PLT	1	Spacer-Zinc Plated
34	340.480052	1	Gasket, Rubber .25x.87x.50
35	340.700010	1	Venturi Assembly
36	340.715003	1	Decal, Air Pressure
37	340.715029	1	Decal, Serial Name Plate
38	340.480053	1	Rubber Locating Ring
39	340.750801	1	Water Shut-Off Adapter
40	340.760231MCH	1	Adapter
41	340.760260	1	Spring
42	340.760234	1	Lint Filter Bag
43	340.711513	2	WSR-Flat .689x1.06x.029 SS
44	340.260274	1	Grommet
45	340.715388	1	Decal, QAV
46	340.710180	1	Scr-MC TR HD 1/4-20x.75

Vacuum Head Schematic – ULPA Configuration

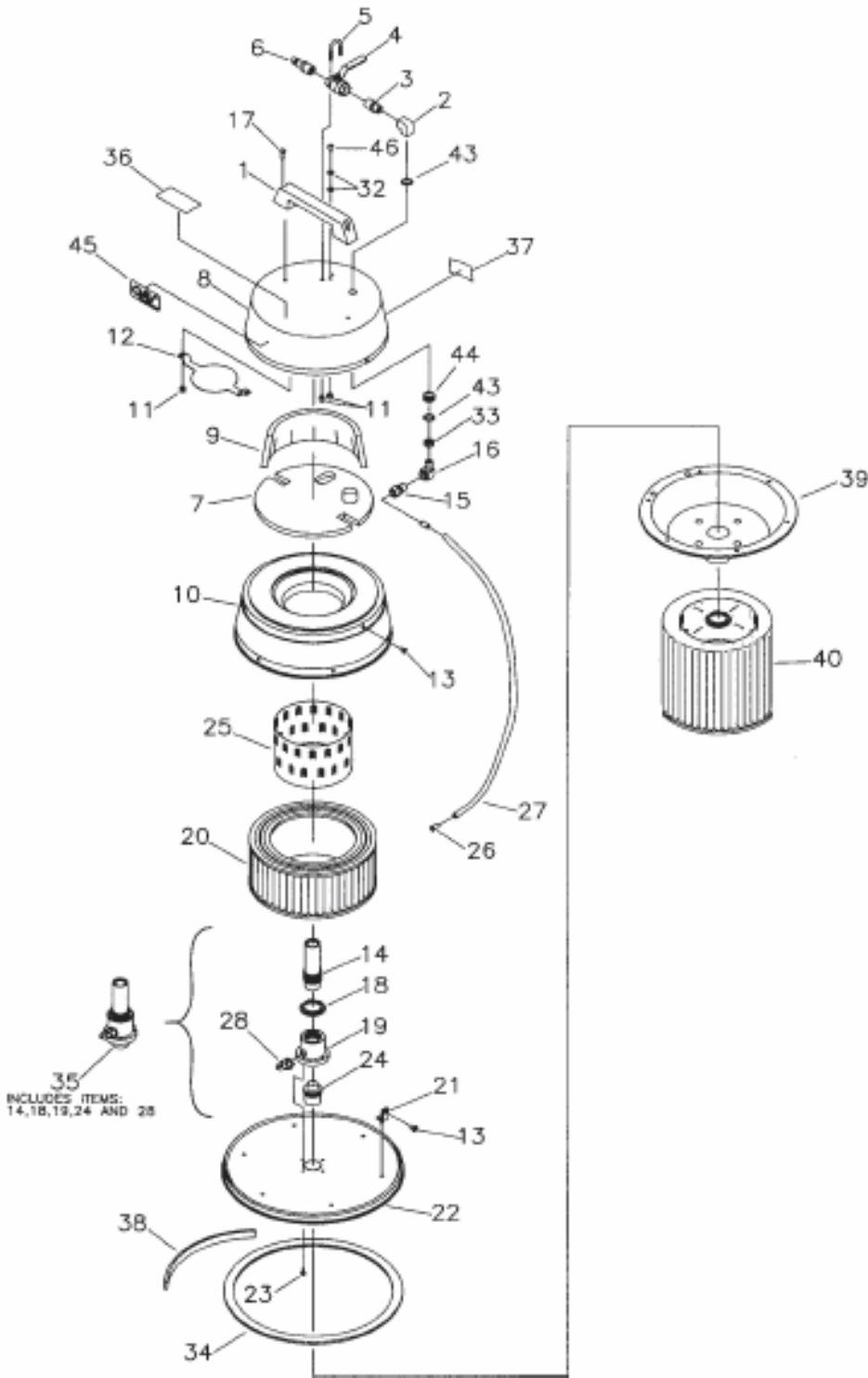


Figure 2 – ULPA Setup

Vacuum Head Parts List – ULPA Configuration

Ref	Part Number	Qty	Description
1	340.460000	1	Handle
2	340.700028	1	3/8 X 3/8 Brass Elbow
3	340.420017	1	Hex Nipple Reducer
4	340.701009	1	.50 Valve
5	340.712105	1	U-Bolt
6	340.701010	1	.50 Coupler
7	340.700018	1	Dome Felt
8	340.700022PTD	1	Top Cover
9	340.700016	1	Felt Liner
10	340.700023PTD	1	Filter Cover-Outer Housing
11	340.712667	11	1/4-20 SS Nyloc Nut
12	340.700019	1	Air Deflector
13	340.710178	9	1/4-20 x .50 SCR-MC STPL
14	340.700012	1	Venturi Exhaust Tube
15	340.420008	1	Male Connector
16	340.830062	1	3/8 x 3/8 Brass ST90
17	340.713002	2	BLT HH 1/4-20 x .75 #5
18	340.700014	1	Locking Nut
19	340.700011	1	Venturi Housing
20	340.700026	1	Exhaust Filter
21	340.832106	6	Bracket Mounting Tab
22	340.700024	1	Bottom Pan
23	340.712536	4	SCR-THMC 10-24 x .62 STPL
24	340.700013	1	Venturi Intake
25	340.700017	1	Perforated Shield
26	340.420011	2	Brass Insert
27	340.700021	1	Poly Hose 32" Long
28	340.420009	1	Male Elbow 469F
32	340.711504	4	WSR-Flat 1/4 SS
33	340.829285PLT	1	Spacer-Zinc Plated
34	340.480052	1	Gasket, Rubber .25x.87x.50
35	340.700010	1	Venturi Assembly
36	340.715003	1	Decal, Air Pressure
37	340.715029	1	Decal, Serial Name Plate
38	340.480053	1	Rubber Locating Ring
39	340.700039	1	ULPA Adapter
40	340.110029	1	ULPA Filter
43	340.711513	2	WSR-Flat .689x1.06x.029 SS
44	340.260274	1	Grommet
45	340.715388	1	Decal, QAV
46	340.710180	1	Scr-MC TR HD 1/4-20x.75

Tank Schematic – Wet/Dry & ULPA

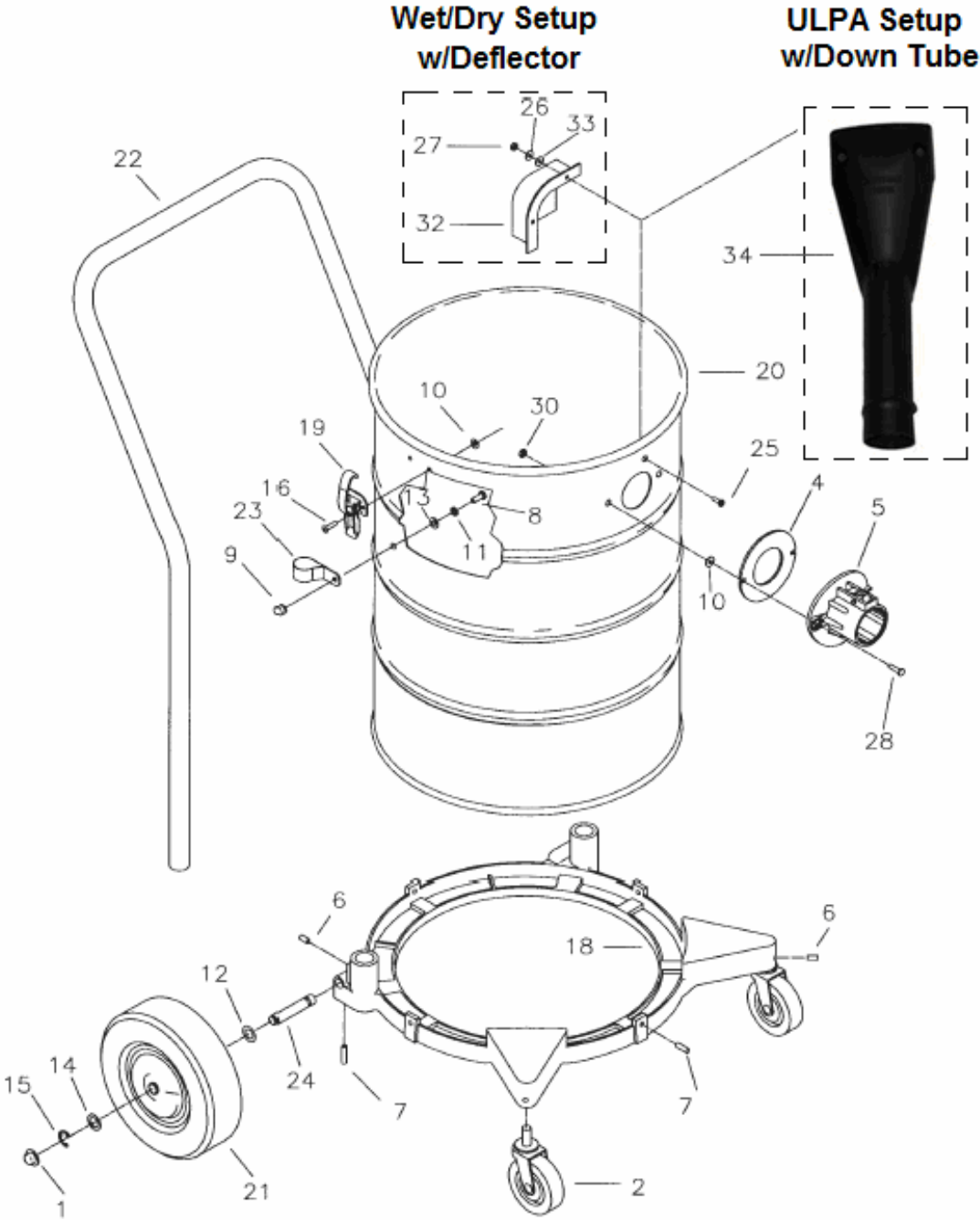


Figure 3 – Tank

Tank Parts List – Wet/Dry & ULPA

Item	Part Number	Qty	Description
1	340.130032	2	Cap, Retainer
2	340.280016	2	Caster 3"
4	340.390087	1	Gasket Diecut
5	340.390110	1	Intake Assembly Aluminum
6	340.711005	4	SCR-SK 1/4-20 x .31
7	340.711006	6	SCR-SK 1/4-20 x .62
8	340.711202	2	BLT-HH 1/4-20 x .50 STPL
9	340.711352	2	Nut-Acorn 1/4-20 ST NI
10	340.711503	6	WSR-Flat #10
11	340.711505	2	WSR-Flat 1/4
12	340.711524	2	WSR-Wave .52 x .87 x .01
13	340.711591	2	WSR-Rubber
14	340.711594	2	WSR-Flat .56 x .88 x .03 NI
15	340.711713	2	Retaining Ring Ext .50
16	340.711915	4	Rivet-Tube .19 x .28 NI PL
18	340.760984PTD	1	Bracket, Wheel
19	340.761054	2	Latch
20	340.900003POL	1	15 Gallon Tank-Polished
21	340.900008	2	Wheel 8.00 Dia
22	340.900037.PL	1	Handle, Plated
23	340.900038	2	Clamp, Handle
24	340.900066	2	Axle
25	340.710530	1	SCR-MC 8-32x.50 BR (W/D Only)
26	340.711502	1	WSR-Flat #8 (W/D Only)
27	340.711372	1	Nut-Nloc 8-32 (750382 Only)
28	340.712824	2	SCR-THMS 10-24x.75 STPL
30	340.712638	2	Nut Hex 10/24 SS Nyloc (W/D Only)
32	340.900035	1	Deflector, Intake (W/D Only)
33	340.711542	1	Helical Washer #8
34	340.390016	1	Down Tube, Molded (ULPA Only)

Consumables Schematic – Wet/Dry Configuration

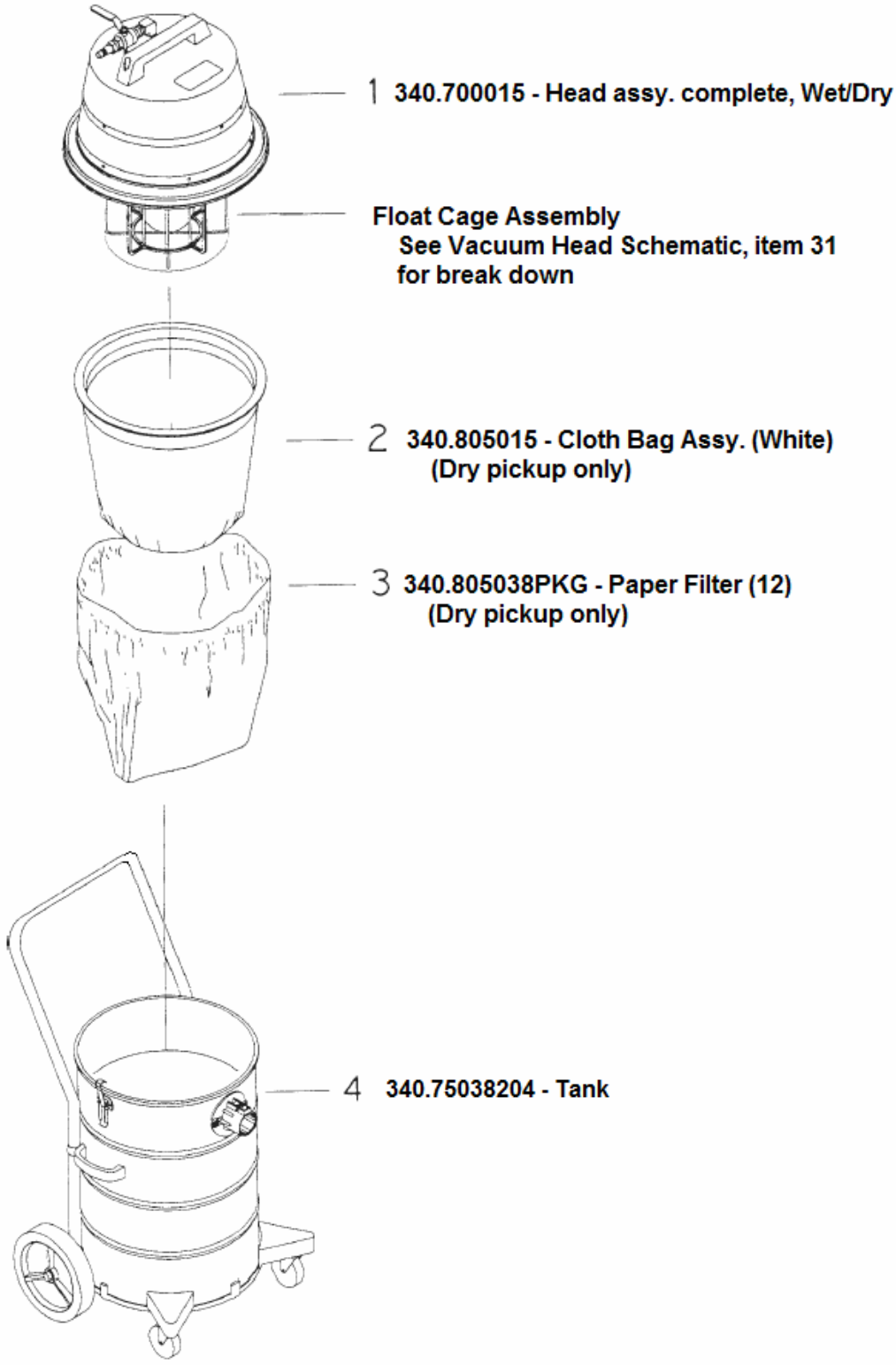


Figure 4 – Wet/Dry Consumables

Consumables Schematic – ULPA Configuration

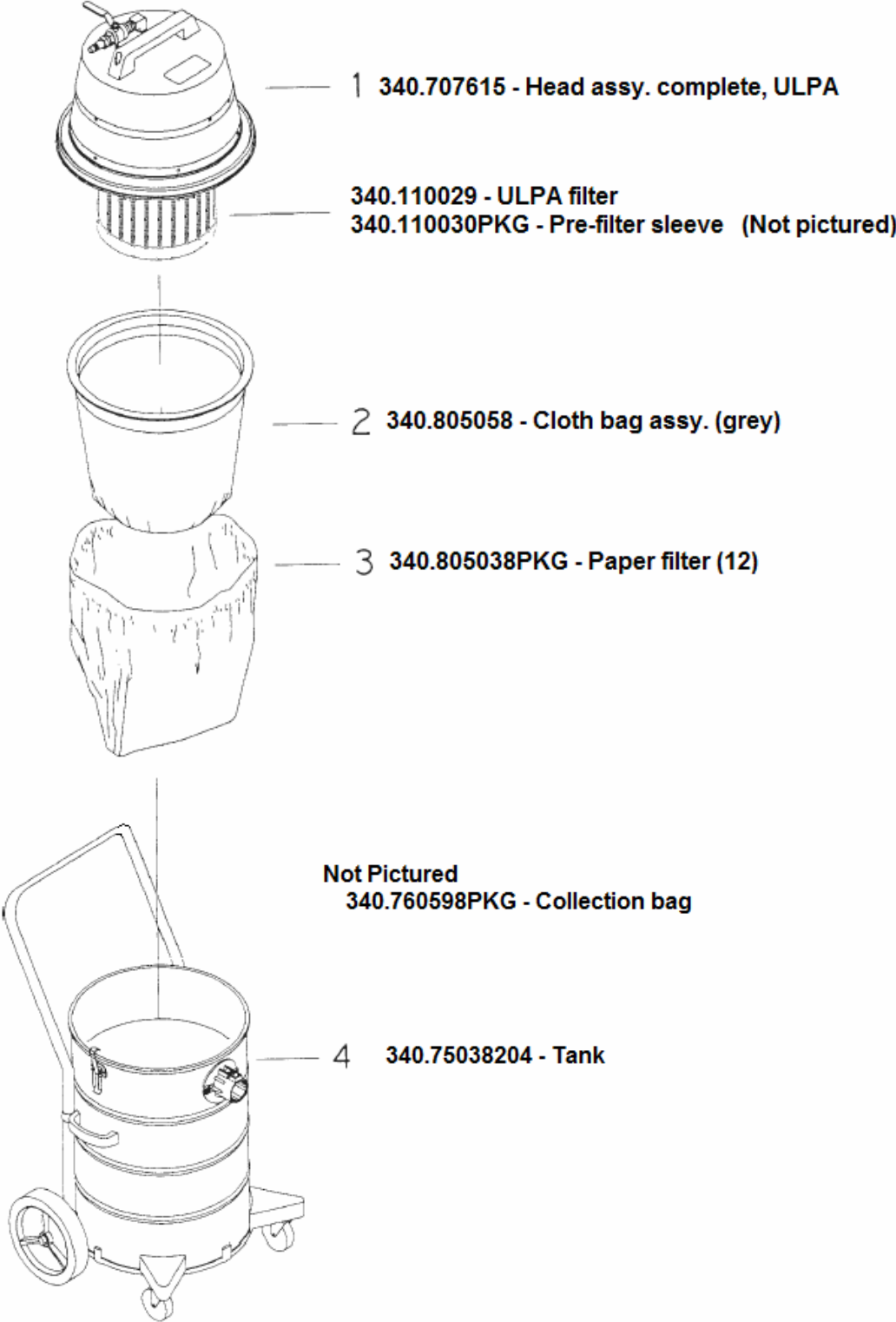


Figure 5 – ULPA Consumables