



**Hand-Held Scarifiers**



**Needleguns**



**Walk-Behind Scarifiers**



**Impact Tools**



**Sanders**



**Specialty Tools**



**Industrial Vacuums**



# DESCO Pneumatic Vacuum

55 Gallon High Efficiency Wet-Dry or HEPA Filtration  
*with Powerful MaxFlo Dual Venturi Technology*



### ***Configurations***

<b>Part</b>	<b>Description</b>
340.987255.01	55 Gal, MaxFlo, Dual Venturi, HEPA Filtration
340.70255.01	55 Gal, MaxFlo, Dual Venturi, Wet/Dry

### **DESCO Mfg. Co., Inc.**

23031 Arroyo Vista • Rancho Santa Margarita, CA 92688  
949.858.7400 • 949.858.9141 fax • 800.337.2648 toll free  
[www.descomfg.com](http://www.descomfg.com) • [info@descomfg.com](mailto:info@descomfg.com)

# Contents

<b>OPERATING INSTRUCTIONS .....</b>	<b>1</b>
INSPECTION.....	1
SPECIAL WARNING.....	1
AIR PRESSURE AND CFM REQUIRED .....	1
MAINTENANCE AND USAGE.....	1
<b>FEATURES AND SPECIFICATIONS .....</b>	<b>1</b>
FEATURES.....	1
SPECIFICATIONS .....	2
<b>CONSUMABLES.....</b>	<b>2</b>
<b>ASSEMBLY PROCEDURES FOR WET/DRY VACUUMS.....</b>	<b>2</b>
<b>SCHEMATICS .....</b>	<b>3</b>
55 GALLON DRUM ASSEMBLY SCHEMATIC .....	3
CART ASSEMBLY SCHEMATIC .....	4
BAG ASSEMBLY SCHEMATIC (DRY CONFIGURATION) .....	5
WATER SHUT-OFF/FLOAT BALL ASSEMBLY (WET CONFIGURATION) .....	6
VACUUM ASSEMBLY SCHEMATIC.....	7
VACUUM HEAD SCHEMATIC .....	8

## Operating Instructions

### ***Inspection***

Carefully unpack and inspect your machine for shipping damage. Each unit is tested and thoroughly inspected before shipment, and any damage is the responsibility of the delivering carrier who should be notified. Read all instructions carefully before operating.

### ***Special Warning***

Air operated equipment can generate static electricity during use. Static dissipating arcing can be generated and occur if equipment and accessories are not grounded. Risk of explosion is possible if operated near explosive materials or vapors. Do not operate this equipment near flammable materials such as solvents, thinners, fuels, grain dust, etc.

### ***Air Pressure and CFM Required***

For maximum performance, operate with 3/4" air pressure line, 100 PSI maximum and 91 CFM. An air pressure control valve can be regulated to operate with lower pressure and CFM when maximum is not required.

### ***Maintenance and Usage***

Air supplied to vacuum must be clean and dry to avoid contamination and to maintain optimum performance.

Empty tank, clean filter bag and replace disposable filters regularly. Clogged filters restrict air flow and results in reduced vacuum performance.

Always shut off main air supply and open air valve at vacuum to relieve pressure before disconnecting air pressure line.

## Features and Specifications

### ***Features***

- Dual Horizontal Venturi High Efficiency Pneumatic Motor
- Exceptionally high static lift and high air flow
- Heavy Duty, Double Lined Electrostatically Applied Painted Tank
- Muffler Reduces Noise to not exceed 80 dba
- Four Stages of Filtration
- Equipped HEPA filter provides trapping efficiency of 99.7% at 0.3 Microns
- Available with float-ball and cage for wet/dry use (340.70255.01)
- Dump Valve For Quick Evacuation of Material
- Heavy Duty Dolly Cart w/spring loaded handle
- 5" Rigid Non-Conductive castors
- Braided grounding strap

### Specifications

- Tank Size: 55 Gallon 16 gauge, Double Rib, HD Powder Coat
- Waterlift: 180 Inches
- Air Requirement: 91cfm
- Air Flow: 364cfm
- Input Pressure: 100psi
- Air Line: ¾"
- Filtration: Four Stage
- DBA: Not to exceed 80dba
- Efficiency Rating: 4.00

### Consumables

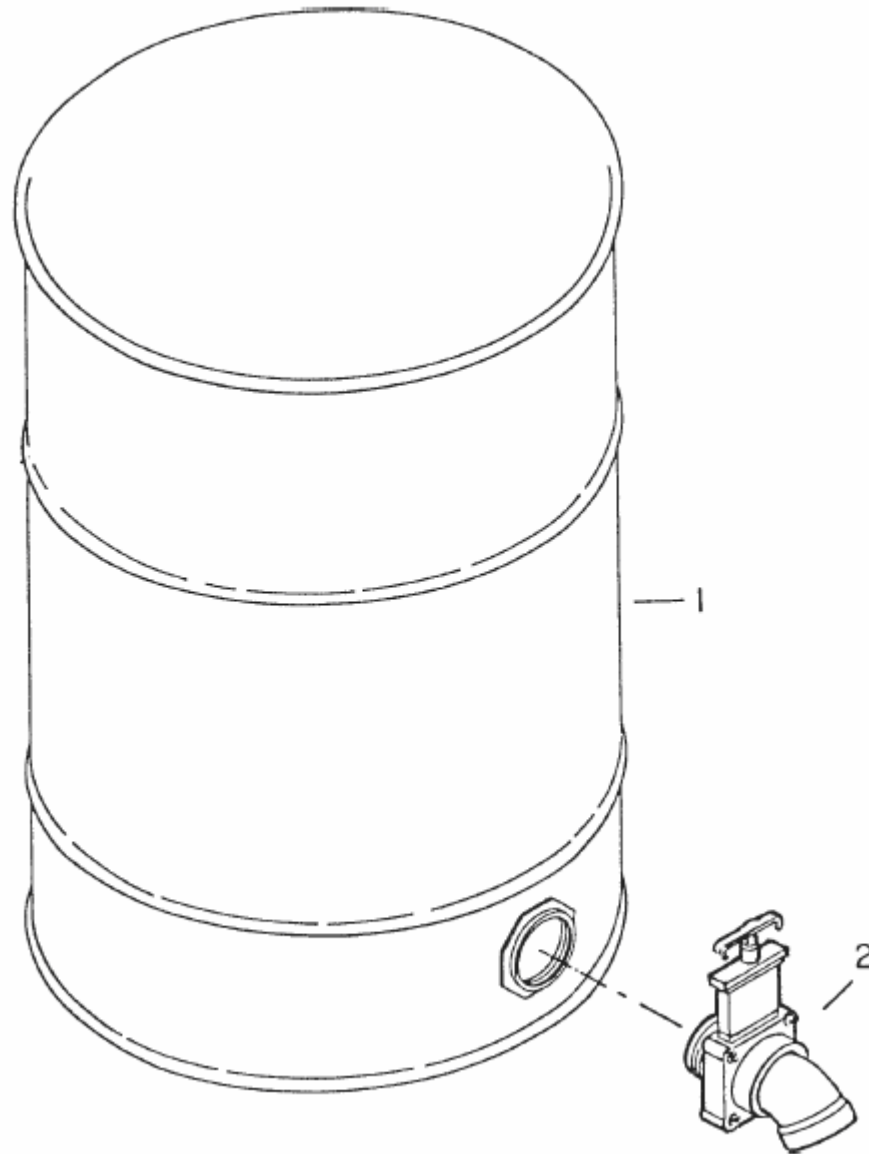
Part	Description
340.805038PKG	Paper filter protectors 12/pkg
340.110028PKG	Pre HEPA filter sleeve 6/pkg
340.110038	HEPA Filter 10"
340.805046PKG	6 mil plastic drum liner / collection bag 12/pkg

### Assembly Procedures for Wet/Dry Vacuums

1. Lay out and inventory all parts
2. Install HEPA pre filter sleeve
3. Install the Paper Protector bag around the metal frame assembly
4. Insert metal frame assembly into collar and clip onto lid, ensuring that the frame and collar are centered and white ring is up away from lid.
5. Install plastic collection bag into 55 gallon drum
6. **WARNING:** After placing the plastic recovery bag inside the drum, use a sharp knife to cut a 1" vertical slit at the top edge of the drum, on the **OPPOSITE** side of the vacuum intake. This will allow the vacuum pressure to equalize on both sides of the bag and prevent it from collapsing when vacuum motor is turn on. **FAILURE** to follow this instruction may cause overheating or more serious damage and may void the warranty on this vacuum.
7. Carefully place lid on top of vacuum drum making sure the intake is opposite of the slit in the bag. This should be done by two persons.
8. **WARNING: DO NOT PICK UP BY AIR INLET MANIFOLD.** This is copper tubing and will break.
9. Insert 3" aluminum adapter sleeve into vacuum inlet and secure with thumb screw.
10. Install the 3" vacuum hose
11. Install 4 way vacuum hose manifold and put on 25' vacuum hoses. Attach vacuum host to intake. **NOTE:** If not using all of the vacuum hose outlets, cover with aluminum plugs and secure with thumb screw. This will maximize the vacuum pressure. Not doing so will cut down on the vacuum on the other hoses.

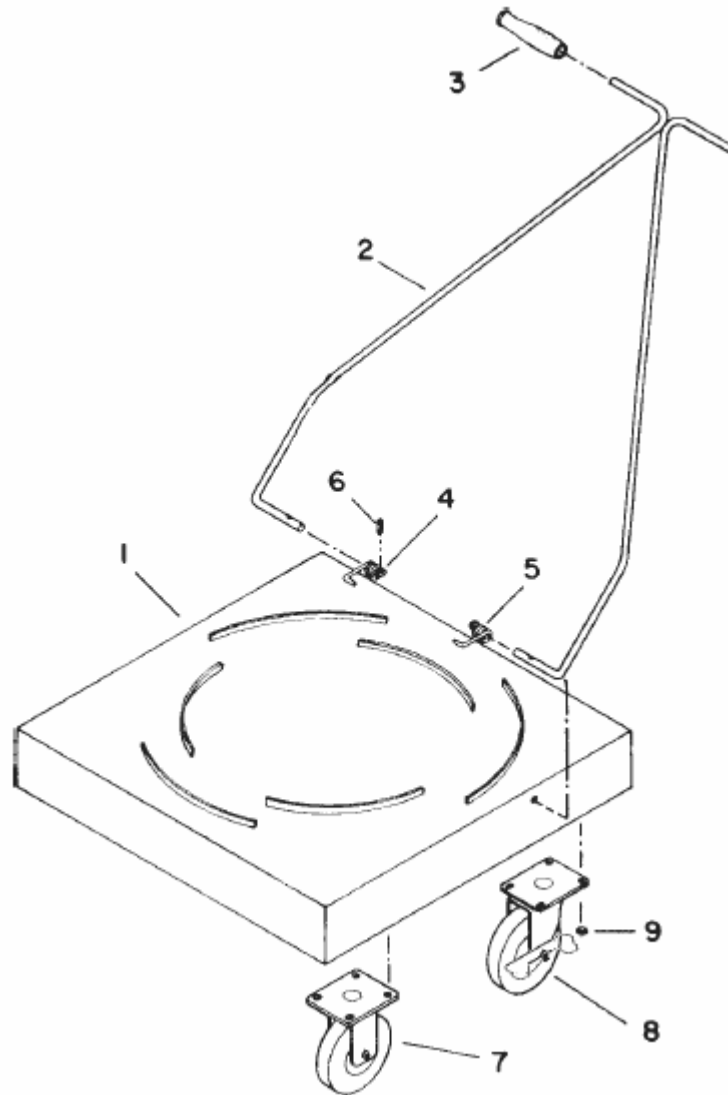
## Schematics

### 55 Gallon Drum Assembly Schematic



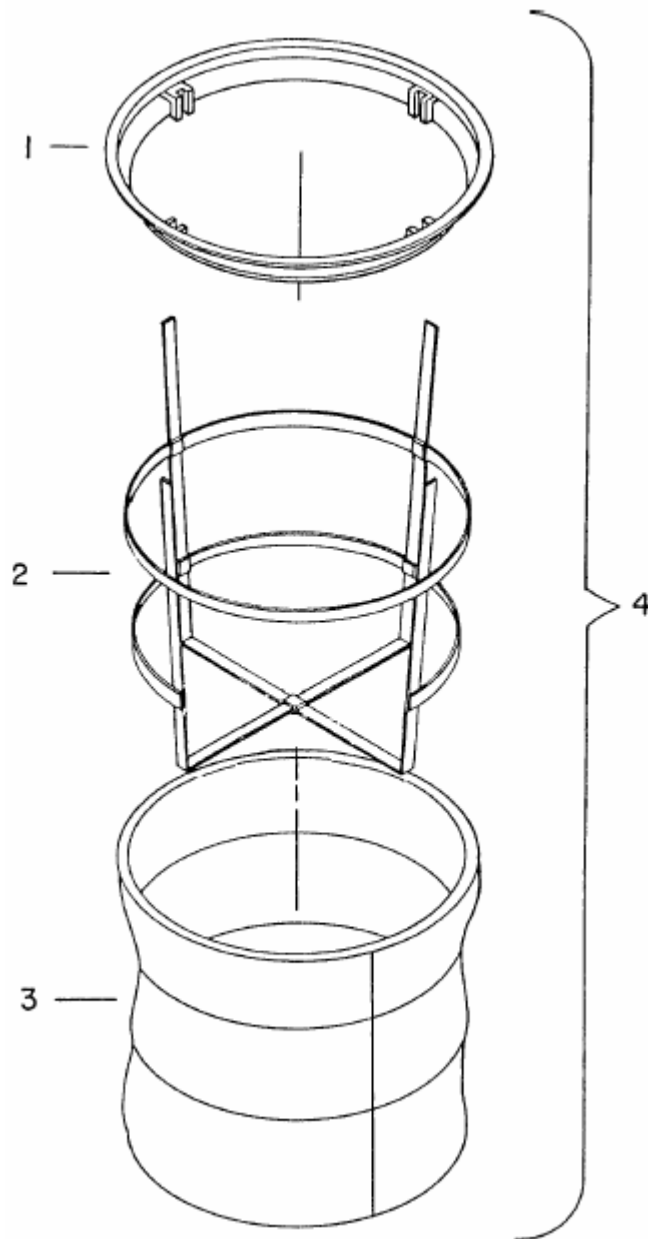
Item	Part Number	Qty	Description
1	340.900015PTD	1	Tank 55 Gal PTD No Handles
2	340.900047	1	Dump Valve
***	340.900015	1	Tank 55 Gal Complete
***	340.805046PKG	1	Drum Liner 55 Gal (Pkg 12)

## Cart Assembly Schematic



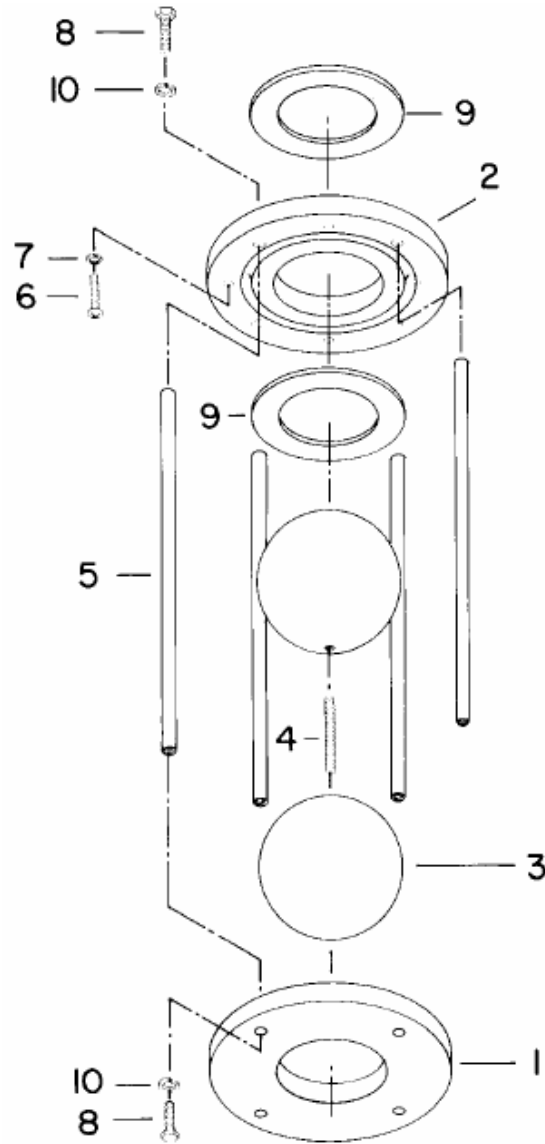
Item	Part Number	Qty	Description
1	340.750045	1	Weldment dolly 55
2	340.900051	1	Weldment, handle
3	340.900052	2	Grip, handle
4	340.900080	1	Spring, torsion RH
5	340.900081	1	Spring, LH
6	340.711642	2	Rollpin
7	340.7910015	2	Castor, rigid 5", non-conductive
8	340.7910014	2	Castor, swivel 5", non-conductive, w/brake
9	340.711379	16	Nut-Flanged Wizz 5/16-18 ST PL
****	340.900048		Dolly cart complete

## Bag Assembly Schematic (Dry Configuration)



Item	Part Number	Qty	Description
1	340.760131	1	Molded bag ring
2	340.750097	1	Bag frame
3	340.805054	1	Cloth bag only
4	340.805057	1	Bag assy. complete

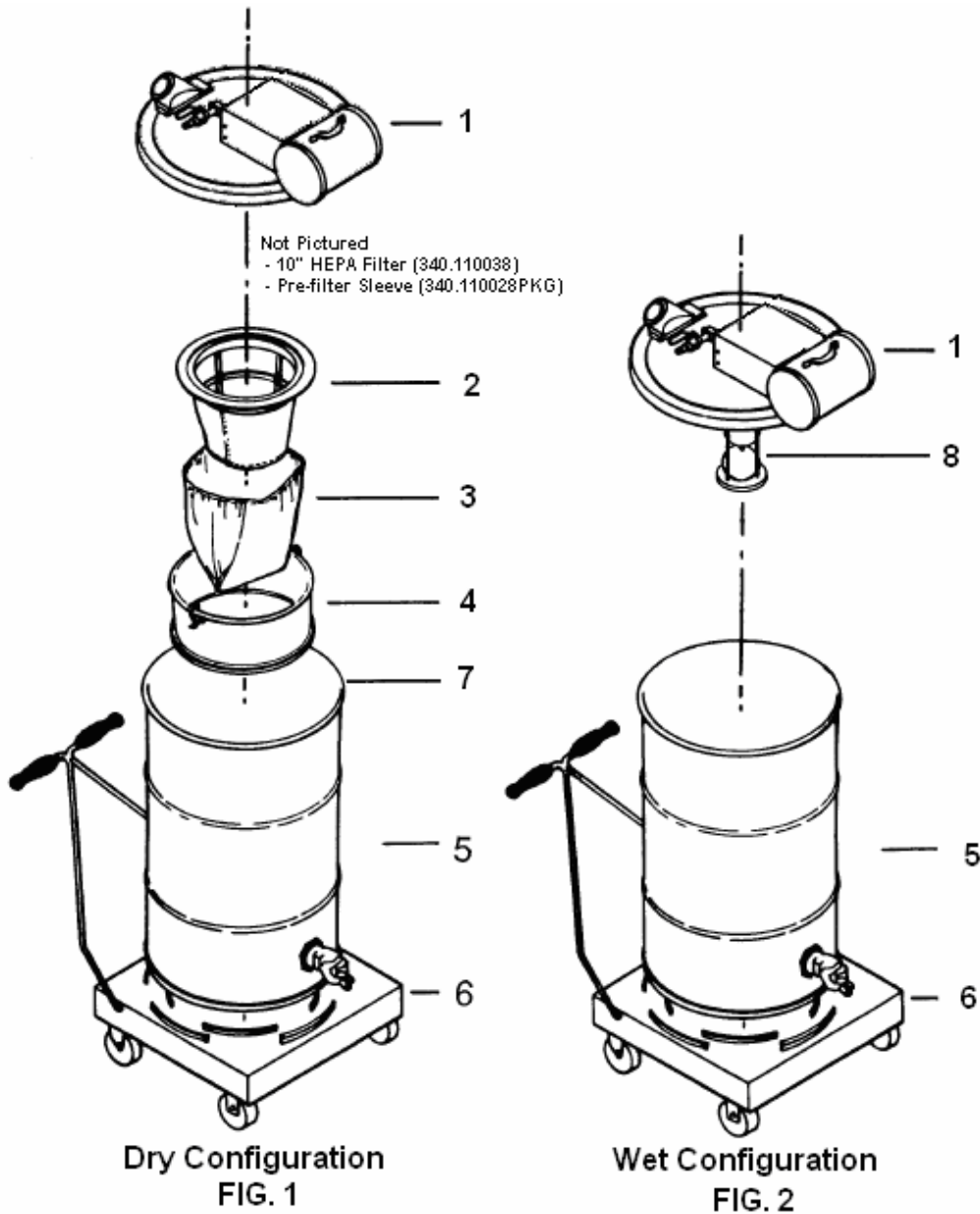
## Water Shut-off/Float Ball Assembly (Wet Configuration)



Item	Part	Qty	Description
1	340.701041	1	Plate, end cap water shut
2	340.701042	1	Plate, end cap water shut
3	340.701016	2	Ball, float 4 dia.
4	340.701013	1	Stud
5	340.701012	4	Rod, spacer
6	340.701359	2	SCR-MC 10-32 x .87 SS
7	340.711543	2	WSR, Helical Spr LOC #10
8	340.711203	8	BLT, HH 1/4-20 x .62
9	340.701015	2	Gasket, 2.25 x 3.50 x .12
10	340.711544	8	WSR, Helical SPR LOC 1/4
--	340.515003	--	Float assy. complete

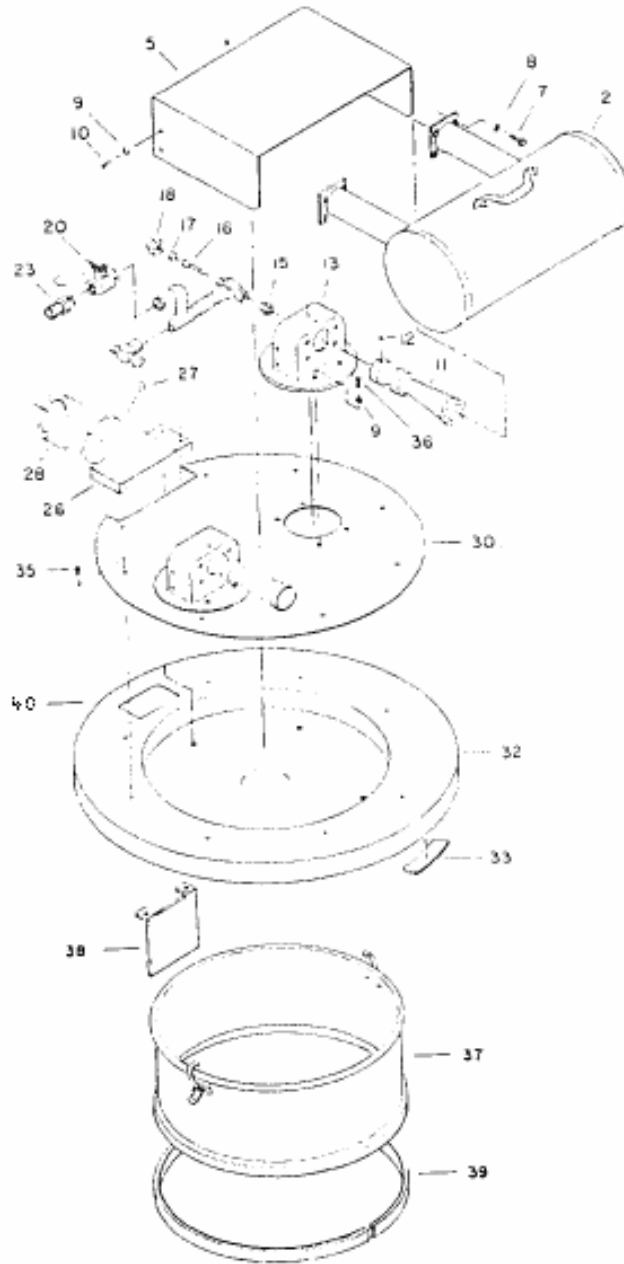


## Vacuum Assembly Schematic



Item	Part Number	Description
1	340.702111	Lid assembly complete
2	340.805057	Bag assembly complete
3	340.805038PKG	Paper filter protector
4	340.750326	Splash shield
5	340.900015	55 Gallon drum
6	340.900048	Dolly complete
7	- - -	Liner securing band
8	340.515003	Float ball assy. complete

## Vacuum Head Schematic



340.702111

Item	Part Number	Qty	Description
2	340.702021	1	Muffler
5	340.702023	1	Cover
7	340.711229	4	BLT-HH 5/16-18 x 7/8
8	340.711545	4	WSR-LOC 5/16
9	340.710353	4	SCR-MC 10/32 x 3/8
10	340.711543	4	WSR-LOC #10
11	340.701006MCH	AR	Venturi horn
12	340.711005	AR	SCR-ST 1/4-20 x 5/16
13	340.701005	1	Venturi housing
15	340.701029	AR	Orifice
16	340.750641	AR	Needle assy.
17	340.711010	AR	Set screw
18	340.711357	AR	Nut-acorn 5/8 x 11
20	340.702002	1	Air valve 3/4
23	340.702003	1	Coupler
25	340.702001	1	Valve body assy.
26	340.760008PTD	1	Intake
27	340.712016	1	Set screw
28	340.900056	1	Adapter
30	340.762214PTD	1	Lid cover
32	340.760010PTD	1	Lid, 55 gallon common
33	340.806006MCH	1	Gasket
35	340.711109	8	SCR-self tap #12 x 1/2
36	340.710356	5	SCR-MC 10-32 x 5/8
37	340.750326	1	Splash shield, includes item #39
38	340.760159	1	Deflector
39	340.650165	-	Edging
40	340.701204	1	Braided ground strap