



**Hand-Held  
Scarifiers**



**Needleguns**



**Walk-Behind  
Scarifiers**



**Impact Tools**



**Sanders**



**Specialty  
Tools**

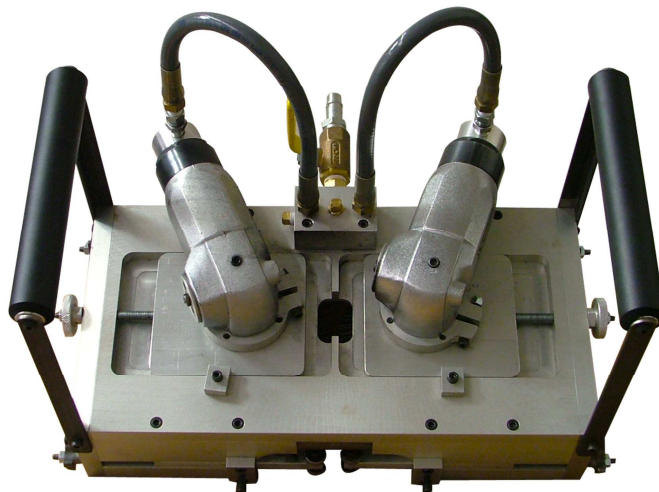


**Industrial  
Vacuums**



# Double Edge Web Scaler

*User's Guide*



## **DESCO Mfg. Co., Inc.**

23031 Arroyo Vista • Rancho Santa Margarita, CA 92688  
949.858.7400 • 949.858.9141 fax • 800.337.2648 toll free  
[www.descomfg.com](http://www.descomfg.com) • [info@descomfg.com](mailto:info@descomfg.com)

# Contents

<b>PRODUCT DESCRIPTION</b> .....	1
<b>SPECIFICATIONS</b> .....	1
<b>SAFETY</b> .....	1
<b>OPERATION</b> .....	2
<b>INSTALLATION AND REMOVAL OF BRISTLE HUB AND RELOAD</b> .....	2
<b>MAINTENANCE</b> .....	2
<b>SCHEMATIC, DOUBLE EDGE WEB SCALER</b> .....	3
FIGURE 1 – TOP – SIDE – BOTTOM VIEWS.....	3
FIGURE 2 – TOP VIEW.....	4
FIGURE 3 – SIDE VIEW .....	5
FIGURE 4 – BOTTOM VIEW.....	6
PARTS LIST, DOUBLE EDGE WEB SCALER.....	7
<b>SCHEMATIC, PNEUMATIC MOTOR</b> .....	8
FIGURE 5 – ILLUSTRATION, PNEUMATIC MOTOR .....	8
PARTS LIST, PNEUMATIC MOTOR .....	9

## Product Description

The Desco Double Edge Web Scaler machine is ergonomically designed to accommodate operator "walk behind" operation. It has two 2hp pneumatic motors rated at 6000 rpm's. The motors require 80 CFM @ 90 PSI. Foam rubber handle covers reduce vibration. The hub incorporates a single laminated abrasive hub made from Radial Bristle Discs, designed for surface preparation for the top and bottom of a plate simultaneously of various sizes. Manual adjustment of the motors allows for maximum life of the bristle hub. The bearing rollers allow for ease of movement along plate. Aluminum components are powder coated or anodized to minimize corrosion from marine environment.

## Specifications

Weight: 40 lbs

Air Requirement: 80CFM @ 90 PSI

Motors: 2 Pneumatic motors, adjustable to accommodate thickness of metal

Rated: 2HP

RPM: 6000

Fittings: 1/2" Male NPT air fitting w/ 1/2" ball valve

Hub: Quick Change

Abrasive: 6 inch 36 Grit Radial Bristle

## Safety

1. Read and fully understand the safety precautions described below. For any questions or clarifications, please call our customer Service at (800) 337-2648.
2. Never use this machine for anything other than its intended purpose.
3. Never change bristle hub or abrasive when tool is attached to a power source.
4. Always wear personal protective equipment

## Operation

1. Make sure work area is clear of all excess machinery and the area is free of debris. Ensure plate dry to maximize cleanliness.
2. Make sure adjustment bar retainer plates are loose
3. Set roller guides to thickness of metal plate by setting the adjustment roller bar knobs located on each side of machine and tighten bar retainer plate screws.
4. Insert machine on edge of plate, ensuring plate edge is against rollers, adjust as necessary.
5. Verify the Double Edge Web Scaler is centered by looking through the view port. Adjust as needed using roller guide knobs.
6. Secure rollers by tightening the adjustment bar retainer plate screws.
7. Loosen motor mount retainer plate screws.
8. Center the bristle hubs by using the motor plate adjustment knobs located on each side.
9. Adjust compression of the bristle hub against plate to desired pressure, tighten motor plate clamps.  
**\*\*\*Do not over compress bristle, it will cause premature wear of hub and shorten the life span of bristle\*\*\***
10. Attach air supply and open ball valve. Gradually move web scaler down plate to ensure desired level of cleanliness. Adjust as necessary.
11. When removing web scaler from plate, loosen bristle hub by using motor plate adjustment knobs.

## Installation and Removal of Bristle Hub and Reload

1. To remove bristle reload, remove hub plate retainer screws and take off outside hub plate, remove bristle hub.
2. To install bristle reload, insert bristle reload making sure you align pins with holes on inside and outside hub plates. Replace hub retainer screws

## Maintenance

1. After every 8 hours of running, the motor and all other moving parts should be wipe down and blown down with compressed air to remove dust and debris.
2. After every days use put 3-4 drops of pneumatic oil into the air fitting and run air through to lubricate the motors.
3. Make sure that all fasteners and hardware are tight prior to any operation of this machine.

## Schematic, Double Edge Web Scaler

Figure 1 – Top – Side – Bottom Views

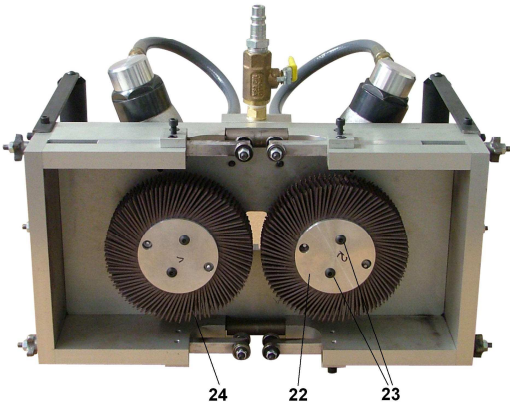
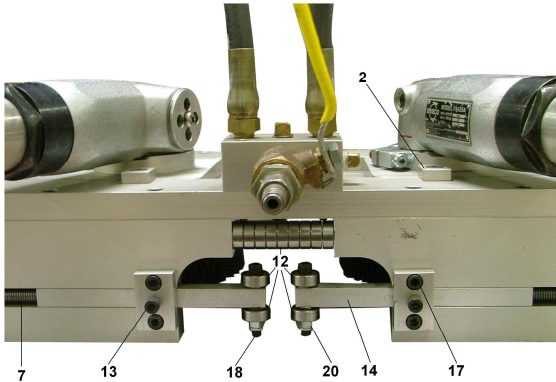
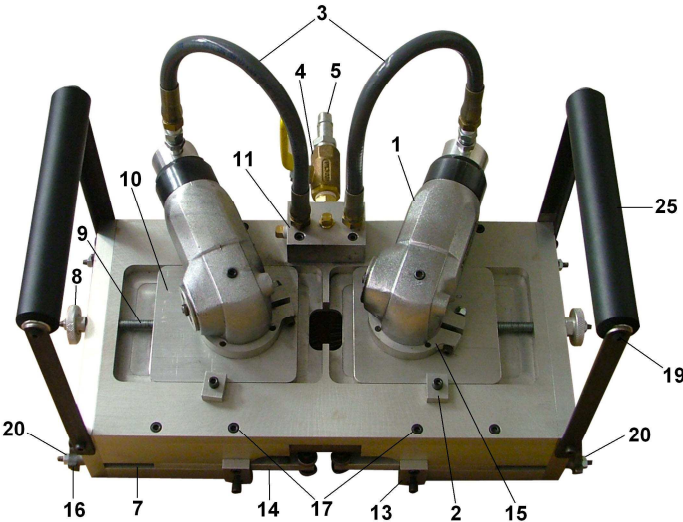


Figure 2 – Top View

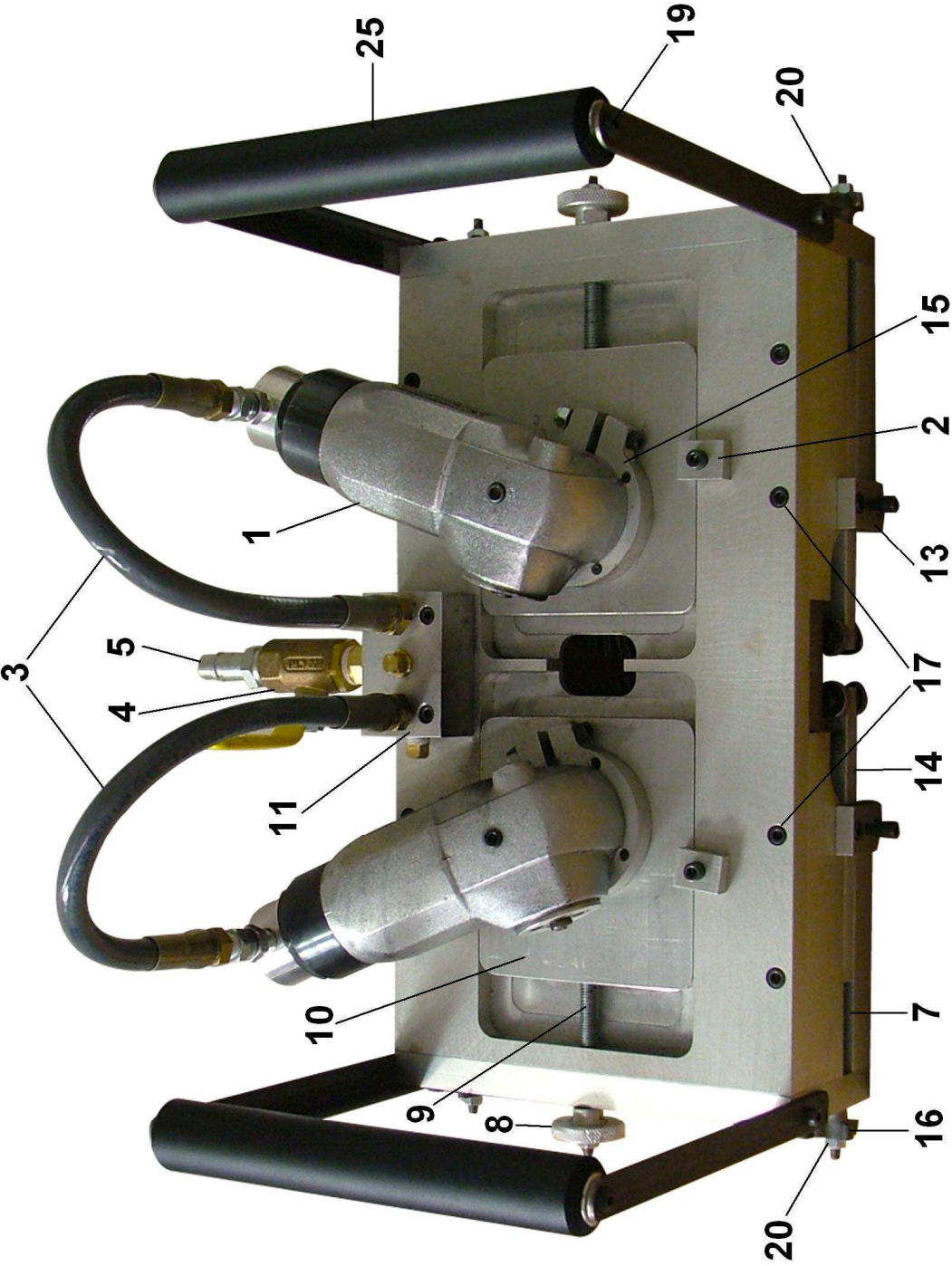


Figure 3 – Side View

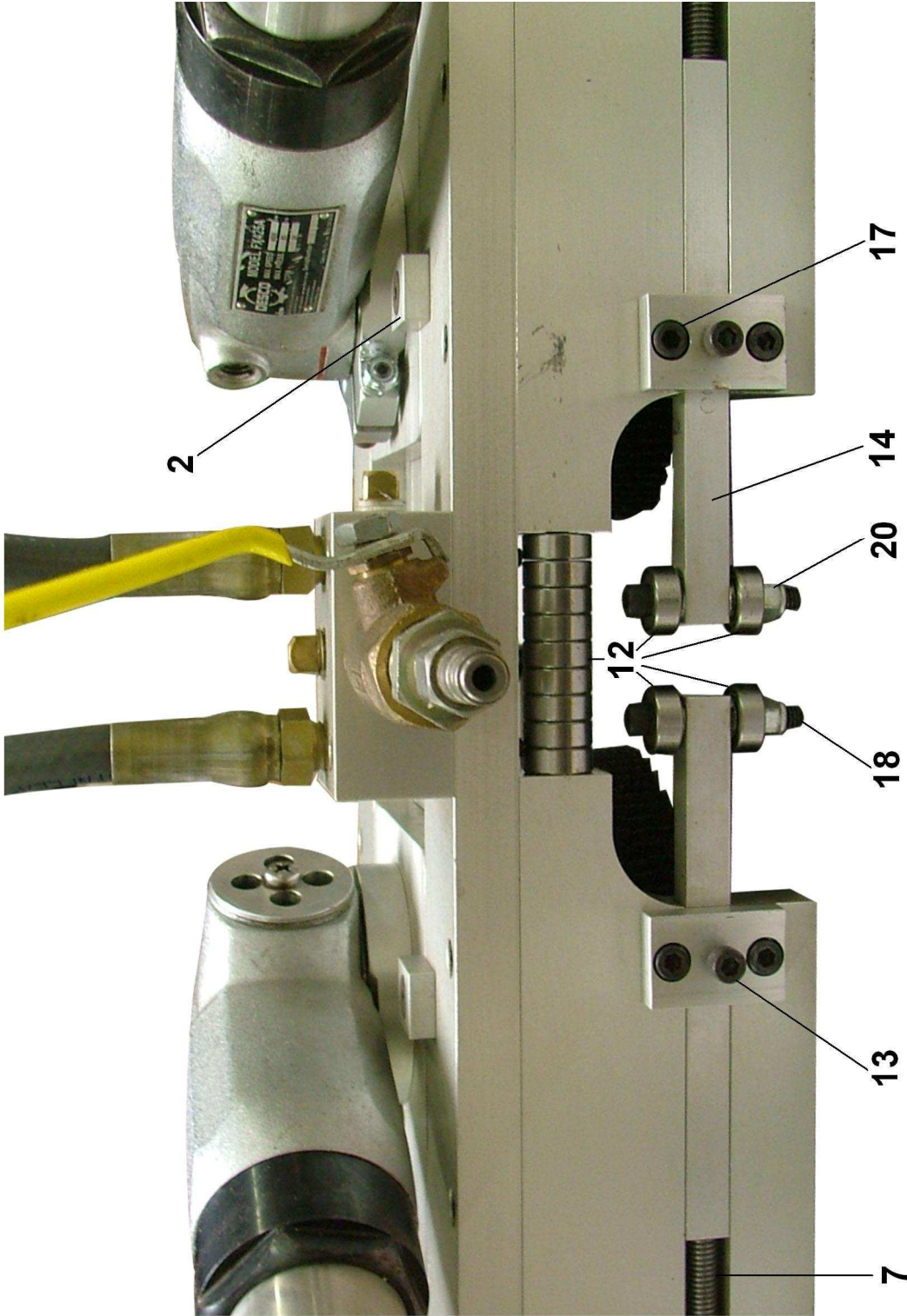
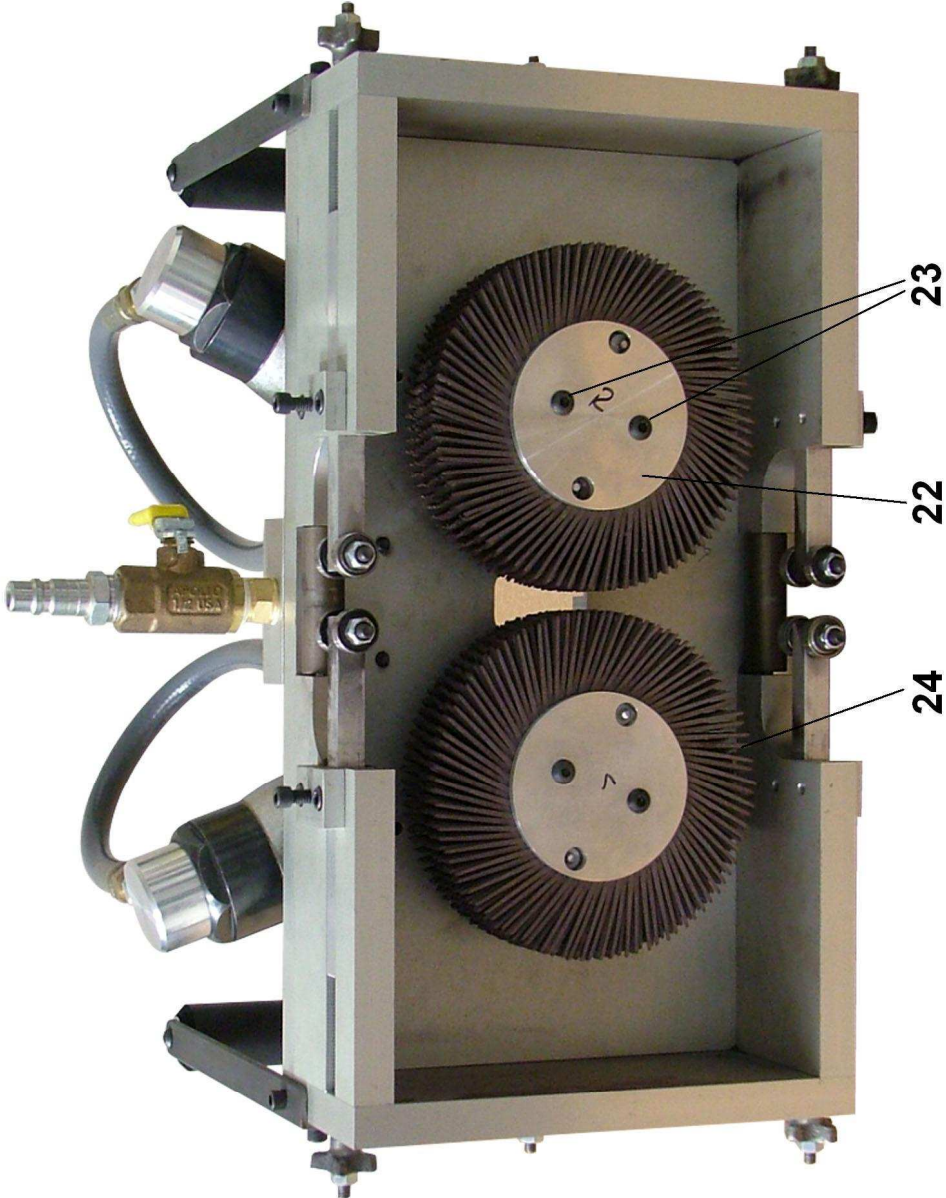


Figure 4 – Bottom View





## Parts List, Double Edge Web Scaler

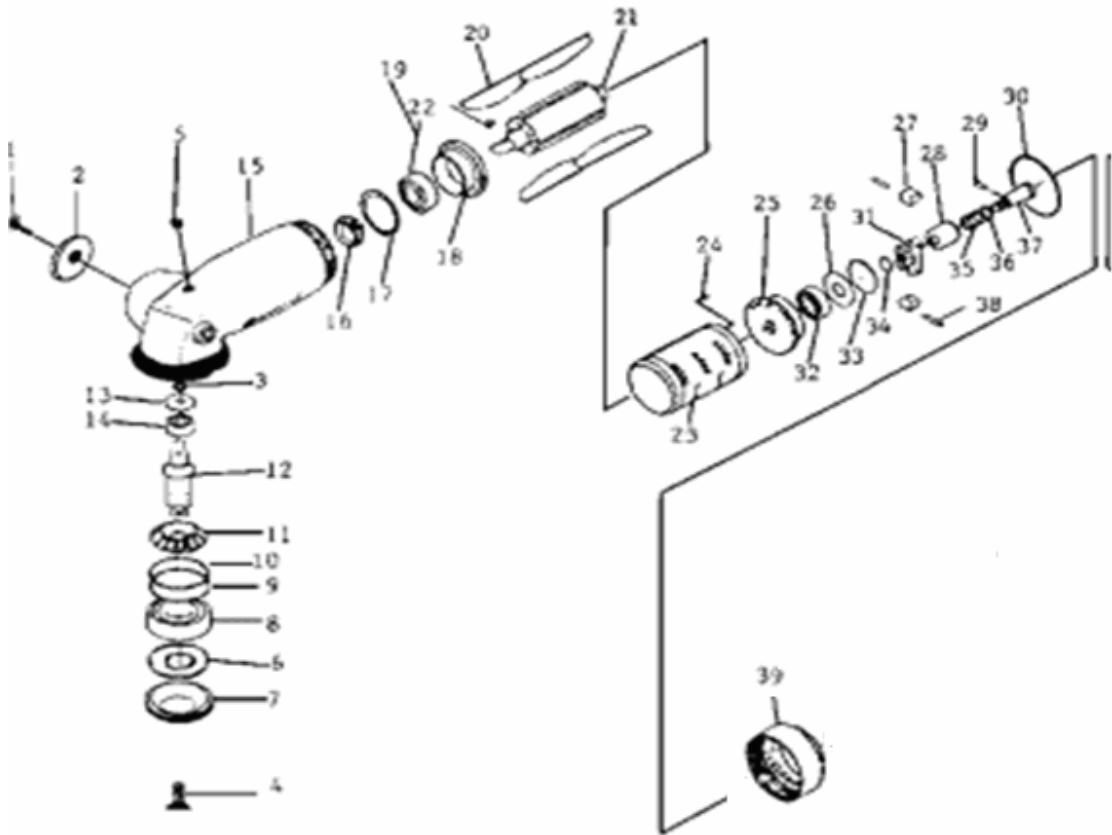
### Part #195.065

Ref	Part	Description	Qty
1	110.014	Motor 2HP	2
2	195.013	Motor mount retainer plate	4
3	195.045	3/8" air hose	2
4	195.027	1/2" Ball valve	1
5	500.164	1/2" X 1/2" male NPT air fitting	1
6	500.016	Handle Assembly	2
7	195.047	Adj. bar screw	4
8	195.049	Motor plate adj. knobs	2
9	195.048	Motor adj. screw	2
10	195.012	Motor mount	2
11	195.022	Manifold	1
12	550.098	Roller bearings	24
13	195.046	Adj. Bar retainer	4
14	195.045	Adj. Bar	4
15	110.057	Mounting pinch clamp	2
16	195.049	Adj. bar knobs	4
17	750.081	1/4-20 x 3/4" SHCS	32
18	750.109	1/4-20 x 1 3/4" SHCS	8
19	750.082	1/4 - 20 x 3/4" Flat Head Screw	4
20	750.104	Nylon Lock nut	12
21	195.067	Hub (inside)	2
22	195.068	Hub Plate (outside)	2
23	750.015	Hub Plate retainer screws	4
24	195.27621	Bristle 36grit 1.5" X 6"	2
25	500.054	Foam Rubber handle grip	2

## Schematic, Pneumatic Motor

Figure 5 – Illustration, Pneumatic Motor

FX AIR MOTOR  
PART # 110.014



## *Parts List, Pneumatic Motor*

Ref	Part	Description	Ref	Part	Description
1	110.019	SCREW	24	550.283	ROLL PIN
2	110.018	MUFFLER	25	550.269	REAR END PLATE
3	550.297	SNAP RING	26	550.274	SPACER
4	750.100	BOLT(4 REQ'D)	27	550.268	GOVENOR WEIGHT
5	550.280	PLUG	28	550.264	GOVENOR WEIGHT
6	550.305	FELT RING	29	550.281	PIN
7	550.262	CASING COVER	30	550.304	"O" RING
8	550.302	BALL BEARING	31	550.267	GOVENOR CASE
9	550.291	SPACER	32	550.300	BALL BEARING
10	550.288	SPACER	33	550.295	SNAP RING
11	550.277	DRIVEN GEAR	34	550.287	SPACER
12	550.275	SPINDLE	35	550.293	SPRING
13	550.256	REAR COVER	36	550.289	SPACER
14	550.299	BALL BEARING	37	550.266	GOVENOR SPINDLE
15	550.261	CASING	38	550.286	ROLL PIN
16	550.276	DRIVING GEAR	39	550.278	VALVE BODY NUT
17	550.290	SPACER			
18	550.273	FORNT PLATE			
19	550.301	BALL BEARING			
20	550.272	BLADE(4 REQ'D)			
21	550.271	ROTOR			
22	550.286	KEY			
23	550.270	CYLINDER			